



Datasheet for ABIN203107
anti-NXF5 antibody (AA 153-202)



[Go to Product page](#)

3 Images

Overview

Quantity:	100 µL
Target:	NXF5
Binding Specificity:	AA 153-202
Reactivity:	Human, Monkey
Host:	Rabbit
Clonality:	Polyclonal
Conjugate:	This NXF5 antibody is un-conjugated
Application:	Western Blotting (WB), Immunohistochemistry (IHC), Immunohistochemistry (Paraffin-embedded Sections) (IHC (p))

Product Details

Immunogen:	Synthetic peptide located between aa153-202 of human NXF5 (Q9H1B4, NP_116564). Percent identity by BLAST analysis: Human, Gorilla, Gibbon, Monkey (100%), Marmoset, Dog (85%), Rat (84%), Mouse (78%). Type of Immunogen: Synthetic peptide
Isotype:	IgG
Specificity:	Human NXF5
Predicted Reactivity:	Percent identity by BLAST analysis: Human (100%).
Purification:	Protein A purified

Target Details

Target:	NXF5
Alternative Name:	NXF5 (NXF5 Products)
Background:	Name/Gene ID: NXF5 Synonyms: NXF5, Nuclear RNA export factor 5, TAP-like protein 1, TAPL-1, TAPL1
Gene ID:	55998
NCBI Accession:	NP_116564
UniProt:	Q9H1B4

Application Details

Application Notes:	Approved: IHC, IHC-P, WB (2.5 µg/mL)
Comment:	Target Species of Antibody: Human
Restrictions:	For Research Use only

Handling

Format:	Lyophilized
Reconstitution:	After adding water, will consist of PBS buffer with 2 % sucrose
Concentration:	Lot specific
Buffer:	Lyophilized from PBS with 2 % sucrose
Handling Advice:	Avoid repeat freeze-thaw cycles.
Storage:	4 °C, -20 °C
Storage Comment:	Long term: -20°C, the use of 50% glycerol is recommended if storing aliquots in -20°C for long term use (up to 1 year) Short term (less than 1 week): 4°C. Avoid freeze-thaw cycles.

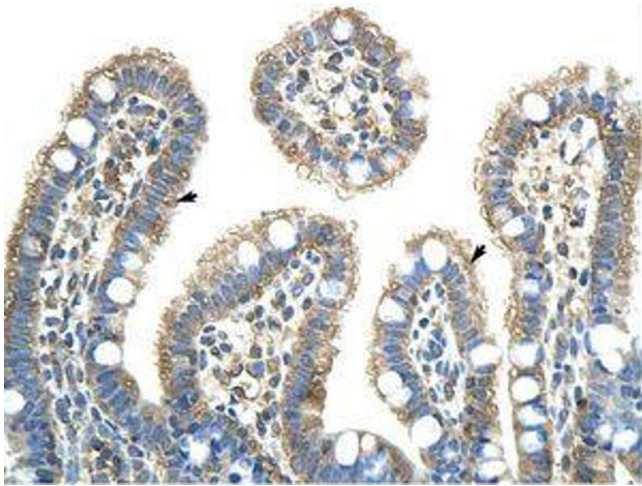


Image 1.



Image 2.

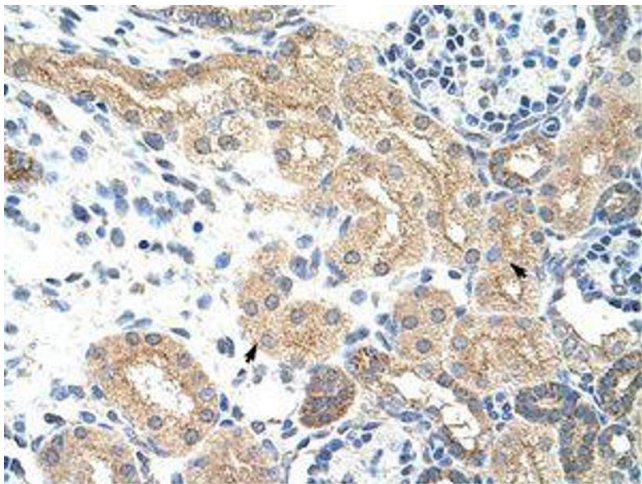


Image 3.