

Datasheet for ABIN203157  
**anti-SMAD5 antibody (AA 193-242)**



[Go to Product page](#)

1 Image

## Overview

Quantity:	100 µL
Target:	SMAD5
Binding Specificity:	AA 193-242
Reactivity:	Human, Mouse, Rat, Cow, Dog, Guinea Pig, Horse, Rabbit, Pig, Monkey
Host:	Rabbit
Clonality:	Polyclonal
Conjugate:	This SMAD5 antibody is un-conjugated
Application:	Western Blotting (WB)

## Product Details

Immunogen:	<p>Synthetic peptide located between aa193-242 of human SMAD5 (Q99717, NP_001001420).  Percent identity by BLAST analysis: Human, Chimpanzee, Gorilla, Orangutan, Gibbon, Monkey, Galago, Marmoset, Mouse, Rat, Elephant, Panda, Dog, Bovine, Rabbit, Horse, Pig, Guinea pig (100%), Zebrafish (93%), Bat, Opossum, Turkey, Zebra finch, Chicken, Platypus (92%), Lizard (85%), Xenopus (80%).</p> <p>Type of Immunogen: Synthetic peptide</p>
Isotype:	IgG
Specificity:	Human SMAD5
Predicted Reactivity:	Percent identity by BLAST analysis: Human, Mouse, Rat, Dog, Bovine, Horse (100%) Zebrafish (93%) Chicken (92%).

## Product Details

Purification: Protein A purified

## Target Details

Target: SMAD5

Alternative Name: SMAD5 ([SMAD5 Products](#))

Background: Name/Gene ID: SMAD5

Synonyms: SMAD5, JV5-1, MADH5, SMAD 5, MAD homolog 5, Mothers against DPP homolog 5, SMA- and MAD-related protein 5, SMAD family member 5, DWFC, HSmad5

Gene ID: 4090

NCBI Accession: [NP\\_001001420](#)

UniProt: [Q99717](#)

## Application Details

Application Notes: Approved: WB (2.5 µg/mL)

Comment: Target Species of Antibody: Human

Restrictions: For Research Use only

## Handling

Format: Lyophilized

Reconstitution: After adding water, will consist of PBS buffer with 2 % sucrose

Concentration: Lot specific

Buffer: Lyophilized from PBS with 2 % sucrose

Handling Advice: Avoid repeat freeze-thaw cycles.

Storage: 4 °C,-20 °C

Storage Comment: Long term: -20°C, the use of 50% glycerol is recommended if storing aliquots in -20°C for long term use (up to 1 year)

Short term (less than 1 week): 4°C. Avoid freeze-thaw cycles.

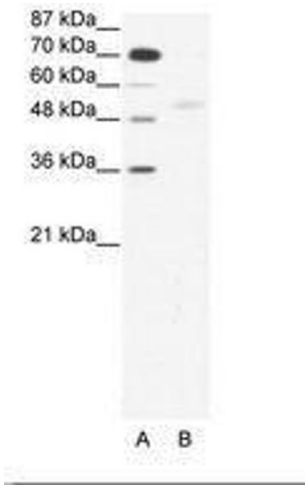


Image 1.