

## Datasheet for ABIN203170 **anti-NR1I2 antibody (C-Term)**



[Go to Product page](#)

### 1 Image

#### Overview

Quantity:	100 µL
Target:	NR1I2
Binding Specificity:	C-Term
Reactivity:	Human, Rat, Pig, Cow, Dog, Guinea Pig, Bat, Monkey
Host:	Rabbit
Clonality:	Polyclonal
Conjugate:	This NR1I2 antibody is un-conjugated
Application:	Western Blotting (WB)

#### Product Details

Immunogen:	Synthetic peptide from C-Terminus of human NR1I2 (Q9UNW4, NP_071285). Percent identity by BLAST analysis: Human, Chimpanzee, Gorilla, Gibbon, Monkey, Galago, Marmoset, Rat, Dog, Bat, Pig (100%), Mouse, Elephant, Rabbit, Horse (92%), Opossum (85%), Guinea pig (84%).  Type of Immunogen: Synthetic peptide
Isotype:	IgG
Specificity:	Human NR1I2 / PXR
Predicted Reactivity:	Percent identity by BLAST analysis: Human, Dog, Pig (100%) Mouse, Rat (92%) Guinea pig (84%).
Purification:	Protein A purified

## Target Details

---

Target:	NR1I2
Alternative Name:	NR1I2 / PXR / PAR ( <a href="#">NR1I2 Products</a> )
Background:	Name/Gene ID: NR1I2 Subfamily: NR1 Thyroid hormone-like Family: NHR  Synonyms: NR1I2, BXR, Orphan nuclear receptor PXR, Orphan nuclear receptor PAR1, PARq, PRR, PXR, Pregnane X receptor, ONR1, SAR, SXR
Gene ID:	8856
NCBI Accession:	<a href="#">NP_071285</a>
UniProt:	<a href="#">O75469</a>
Pathways:	<a href="#">Nuclear Receptor Transcription Pathway</a> , <a href="#">Steroid Hormone Mediated Signaling Pathway</a>

## Application Details

---

Application Notes:	Approved: WB (5 µg/mL)
Comment:	Target Species of Antibody: Human
Restrictions:	For Research Use only

## Handling

---

Format:	Lyophilized
Reconstitution:	Reconstitute with 100 µL sterile ddH2O
Concentration:	Lot specific
Buffer:	Lyophilized from PBS with 2 % sucrose
Handling Advice:	Avoid repeat freeze-thaw cycles.
Storage:	4 °C, -20 °C
Storage Comment:	Long term: -20°C, the use of 50% glycerol is recommended if storing aliquots in -20°C for long term use (up to 1 year) Short term (less than 1 week): 4°C. Avoid freeze-thaw cycles.

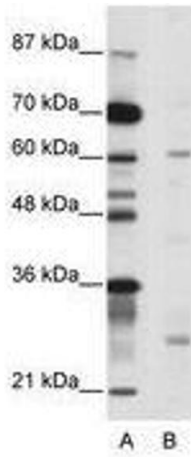


Image 1.