



Datasheet for ABIN203173
anti-GAS7 antibody (AA 118-167)



[Go to Product page](#)

2 Images

Overview

Quantity:	100 µL
Target:	GAS7
Binding Specificity:	AA 118-167
Reactivity:	Human, Dog, Cow, Guinea Pig, Horse, Rabbit, Monkey
Host:	Rabbit
Clonality:	Polyclonal
Conjugate:	This GAS7 antibody is un-conjugated
Application:	Western Blotting (WB), Immunohistochemistry (IHC), Immunohistochemistry (Paraffin-embedded Sections) (IHC (p))

Product Details

Immunogen:	Synthetic peptide located between aa118-167 of human GAS7 (Q7Z571, NP_958839). Percent identity by BLAST analysis: Human, Chimpanzee, Gorilla, Gibbon, Galago, Marmoset, Dog, Bovine, Rabbit, Horse, Guinea pig (100%), Mouse, Rat, Bat (92%), Monkey (85%). Type of Immunogen: Synthetic peptide
Isotype:	IgG
Specificity:	Human GAS7
Predicted Reactivity:	Percent identity by BLAST analysis: Human, Dog, Bovine, Rabbit, Horse, Guinea pig (100%) Mouse, Rat (92%).
Purification:	Protein A purified

Target Details

Target:	GAS7
Alternative Name:	GAS7 (GAS7 Products)
Background:	Name/Gene ID: GAS7 Synonyms: GAS7, GAS-7, Growth arrest-specific 7, MLL/GAS7, MLL/GAS7 fusion protein, KIAA0394
Gene ID:	8522
NCBI Accession:	NP_958839
UniProt:	O60861

Application Details

Application Notes:	Approved: IHC, IHC-P, WB (5 µg/mL)
Comment:	Target Species of Antibody: Human
Restrictions:	For Research Use only

Handling

Format:	Lyophilized
Reconstitution:	After adding water, will consist of PBS buffer with 2 % sucrose
Concentration:	Lot specific
Buffer:	Lyophilized from PBS with 2 % sucrose
Handling Advice:	Avoid repeat freeze-thaw cycles.
Storage:	4 °C, -20 °C
Storage Comment:	Long term: -20°C, the use of 50% glycerol is recommended if storing aliquots in -20°C for long term use (up to 1 year) Short term (less than 1 week): 4°C. Avoid freeze-thaw cycles.

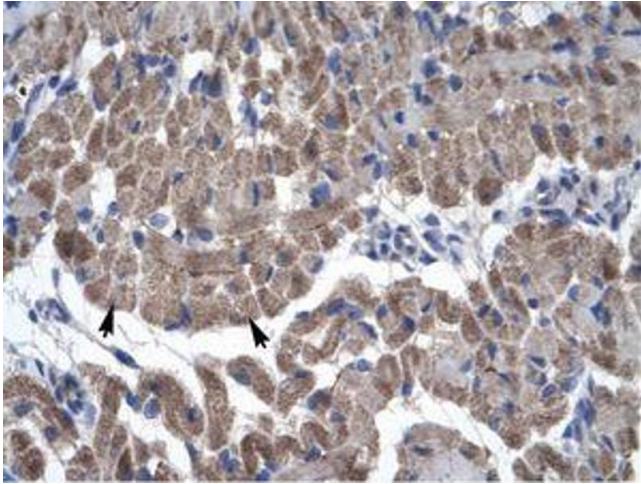


Image 1.

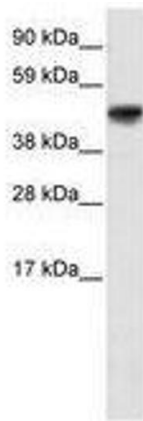


Image 2.