



[Go to Product page](#)

Datasheet for ABIN203177

anti-BRD9 antibody (AA 145-194)

1 Image

Overview

Quantity:	100 µL
Target:	BRD9
Binding Specificity:	AA 145-194
Reactivity:	Human, Mouse, Rat, Dog, Cow, Guinea Pig, Rabbit, Zebrafish (Danio rerio), Monkey, Chicken
Host:	Rabbit
Clonality:	Polyclonal
Conjugate:	This BRD9 antibody is un-conjugated
Application:	Western Blotting (WB)

Product Details

Immunogen:	Synthetic peptide located between aa145-194 of human BRD9 (Q9H8M2, NP_001009877). Percent identity by BLAST analysis: Human, Chimpanzee, Gorilla, Gibbon, Monkey, Galago, Marmoset, Mouse, Rat, Elephant, Dog, Bovine, Rabbit, Opossum, Guinea pig, Turkey, Zebra finch, Chicken, Platypus, Lizard (100%), Horse (92%), Xenopus (84%). Type of Immunogen: Synthetic peptide
Isotype:	IgG
Specificity:	Human BRD9
Predicted Reactivity:	Percent identity by BLAST analysis: Human, Mouse, Rat, Dog, Bovine, Rabbit, Guinea pig, Chicken (100%) Horse (92%) Xenopus (84%).
Purification:	Protein A purified

Target Details

Target: BRD9

Alternative Name: BRD9 ([BRD9 Products](#))

Background: Name/Gene ID: BRD9

Synonyms: BRD9, Bromodomain containing 9, PRO9856, Sarcoma antigen NY-SAR-29, LAVS3040

Gene ID: 65980

NCBI Accession: [NP_001009877](#)

Application Details

Application Notes: Approved: WB (2.5 µg/mL)

Comment: Target Species of Antibody: Human

Restrictions: For Research Use only

Handling

Format: Lyophilized

Reconstitution: After adding water, will consist of PBS buffer with 2 % sucrose

Concentration: Lot specific

Buffer: Lyophilized from PBS with 2 % sucrose

Handling Advice: Avoid repeat freeze-thaw cycles.

Storage: 4 °C, -20 °C

Storage Comment: Long term: -20°C, the use of 50% glycerol is recommended if storing aliquots in -20°C for long term use (up to 1 year)

Short term (less than 1 week): 4°C. Avoid freeze-thaw cycles.

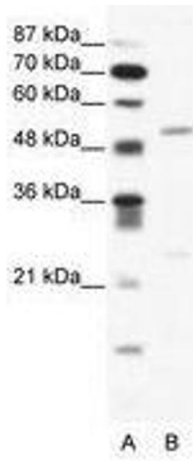


Image 1.