

Datasheet for ABIN203218  
**anti-HNRNPL antibody (AA 281-330)**

## 2 Images

[Go to Product page](#)

## Overview

Quantity:	100 µL
Target:	HNRNPL
Binding Specificity:	AA 281-330
Reactivity:	Human, Mouse, Rat, Cow, Guinea Pig, Rabbit, Horse, Zebrafish (Danio rerio), Bat, Monkey
Host:	Rabbit
Clonality:	Polyclonal
Conjugate:	This HNRNPL antibody is un-conjugated
Application:	Western Blotting (WB), Immunohistochemistry (IHC), Immunohistochemistry (Paraffin-embedded Sections) (IHC (p))

## Product Details

Immunogen:	Synthetic peptide located between aa281-330 of human HNRNPL (P14866, NP_001524). Percent identity by BLAST analysis: Human, Chimpanzee, Gorilla, Gibbon, Galago, Marmoset, Mouse, Rat, Elephant, Panda, Bovine, Bat, Rabbit, Horse, Opossum, Guinea pig (100%), Turkey (92%), Zebrafish (83%).  Type of Immunogen: Synthetic peptide
Isotype:	IgG
Specificity:	Human HNRNPL / hnRNP L
Predicted Reactivity:	Percent identity by BLAST analysis: Human, Mouse (100%) Zebrafish (83%).
Purification:	Protein A purified

## Target Details

Target:	HNRNPL
Alternative Name:	HNRNPL / hnRNP L ( <a href="#">HNRNPL Products</a> )
Background:	Name/Gene ID: HNRNPL  Synonyms: HNRNPL, HnRNP L, HnRNP-L, HNRPL, P/OKcl.14
Gene ID:	3191
NCBI Accession:	<a href="#">NP_001524</a>
UniProt:	<a href="#">P14866</a>

## Application Details

Application Notes:	Approved: IHC, IHC-P, WB (2.5 µg/mL)
Comment:	Target Species of Antibody: Human
Restrictions:	For Research Use only

## Handling

Format:	Lyophilized
Reconstitution:	After adding water, will consist of PBS buffer with 2 % sucrose
Concentration:	Lot specific
Buffer:	Lyophilized from PBS with 2 % sucrose
Handling Advice:	Avoid repeat freeze-thaw cycles.
Storage:	4 °C, -20 °C
Storage Comment:	Long term: -20°C, the use of 50% glycerol is recommended if storing aliquots in -20°C for long term use (up to 1 year) Short term (less than 1 week): 4°C. Avoid freeze-thaw cycles.

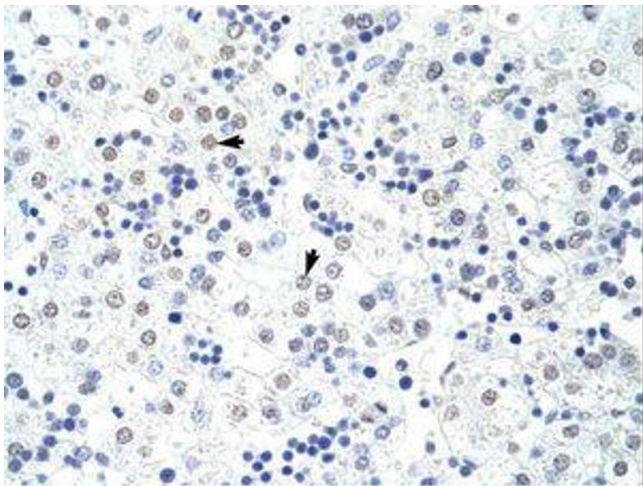


Image 1.

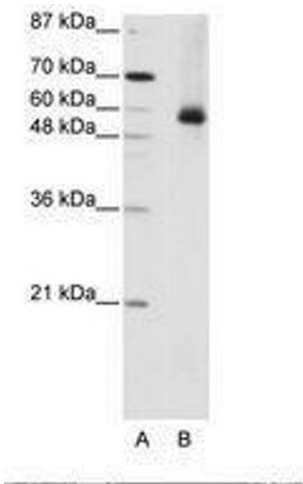


Image 2.