

Datasheet for ABIN203232
anti-SKIL antibody (AA 36-85)[Go to Product page](#)

1 Image

Overview

Quantity:	100 µL
Target:	SKIL
Binding Specificity:	AA 36-85
Reactivity:	Human, Mouse, Rat, Dog, Cow, Guinea Pig, Horse, Rabbit, Pig
Host:	Rabbit
Clonality:	Polyclonal
Conjugate:	This SKIL antibody is un-conjugated
Application:	Western Blotting (WB)

Product Details

Immunogen:	Synthetic peptide located between aa36-85 of human SKIL (P12757-3). Percent identity by BLAST analysis: Human, Gorilla, Orangutan, Gibbon (100%), Elephant (92%), Bat, Horse, Pig, Guinea pig (85%), Mouse, Rat, Zebra finch (84%). Type of Immunogen: Synthetic peptide
Isotype:	IgG
Specificity:	Human SKIL
Predicted Reactivity:	Percent identity by BLAST analysis: Human (100%) Horse, Pig, Guinea pig (85%) Mouse, Rat (84%).
Purification:	Protein A purified

Target Details

Target:	SKIL
Alternative Name:	SKIL / SNO / SnoN (SKIL Products)
Background:	Name/Gene ID: SKIL Synonyms: SKIL, Ski-related oncogene, SnoI, SnoN, SKI-like oncogene, Sno, Ski-related oncogene snoN, Ski-related protein, Ski-like protein, SnoA
Gene ID:	6498
UniProt:	P12757
Pathways:	Positive Regulation of Response to DNA Damage Stimulus

Application Details

Application Notes:	Approved: WB (2.5 µg/mL)
Comment:	Target Species of Antibody: Human
Restrictions:	For Research Use only

Handling

Format:	Lyophilized
Reconstitution:	After adding water, will consist of PBS buffer with 2 % sucrose
Concentration:	Lot specific
Buffer:	Lyophilized from PBS with 2 % sucrose
Handling Advice:	Avoid repeat freeze-thaw cycles.
Storage:	4 °C, -20 °C
Storage Comment:	Long term: -20°C, the use of 50% glycerol is recommended if storing aliquots in -20°C for long term use (up to 1 year) Short term (less than 1 week): 4°C. Avoid freeze-thaw cycles.

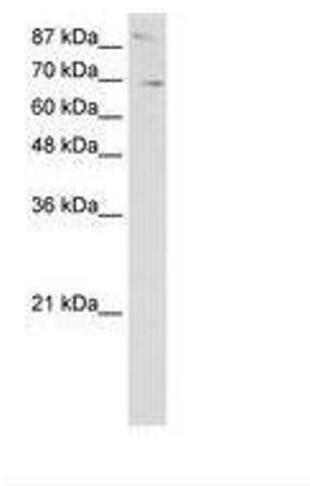


Image 1.