



[Go to Product page](#)

Datasheet for ABIN203236  
**anti-KIAA0020 antibody (AA 61-110)**

2 Images

Overview

Quantity:	100 µL
Target:	KIAA0020 (PUM3)
Binding Specificity:	AA 61-110
Reactivity:	Human, Cow, Guinea Pig, Monkey
Host:	Rabbit
Clonality:	Polyclonal
Conjugate:	This KIAA0020 antibody is un-conjugated
Application:	Western Blotting (WB), Immunohistochemistry (IHC), Immunohistochemistry (Paraffin-embedded Sections) (IHC (p))

Product Details

Immunogen:	Synthetic peptide located between aa61-110 of human KIAA0020 (Q15397). Percent identity by BLAST analysis: Human, Gorilla, Gibbon, Marmoset (100%), Panda, Dog, Pig (92%), Bovine, Bat (85%).  Type of Immunogen: Synthetic peptide
Isotype:	IgG
Specificity:	Human KIAA0020
Predicted Reactivity:	Percent identity by BLAST analysis: Dog, Pig (92%) Bovine (85%).
Purification:	Protein A purified

## Target Details

---

Target:	KIAA0020 (PUM3)
Alternative Name:	KIAA0020 / PEN ( <a href="#">PUM3 Products</a> )
Background:	Name/Gene ID: KIAA0020  Synonyms: KIAA0020, HA-8, HPUF-A, HLA-HA8, PEN, RP11-526D20.2, XTP5, Penguin homolog, PUF6
Gene ID:	9933
UniProt:	<a href="#">Q15397</a>

## Application Details

---

Application Notes:	Approved: IHC, IHC-P, WB (1.25 µg/mL)
Comment:	Target Species of Antibody: Human
Restrictions:	For Research Use only

## Handling

---

Format:	Lyophilized
Reconstitution:	After adding water, will consist of PBS buffer with 2 % sucrose
Concentration:	Lot specific
Buffer:	Lyophilized from PBS with 2 % sucrose
Handling Advice:	Avoid repeat freeze-thaw cycles.
Storage:	4 °C, -20 °C
Storage Comment:	Long term: -20°C, the use of 50% glycerol is recommended if storing aliquots in -20°C for long term use (up to 1 year) Short term (less than 1 week): 4°C. Avoid freeze-thaw cycles.

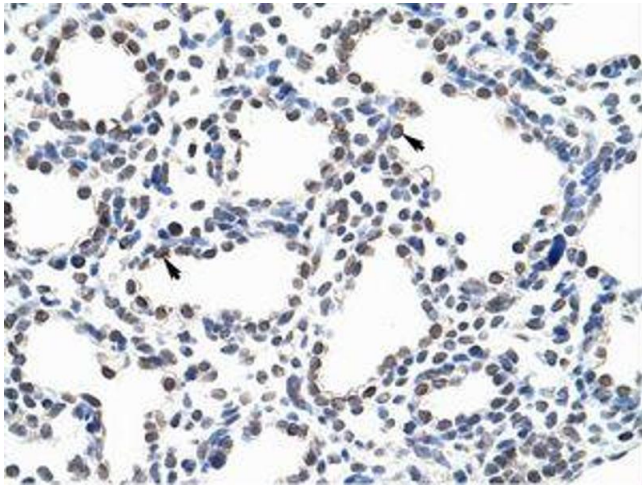


Image 1.

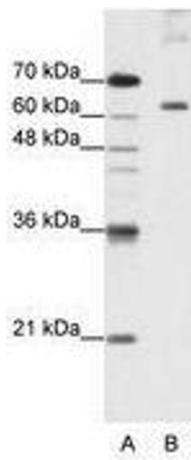


Image 2.