



[Go to Product page](#)

Datasheet for ABIN203238

anti-MID1 antibody (AA 465-514)

1 Image

Overview

Quantity:	100 µL
Target:	MID1
Binding Specificity:	AA 465-514
Reactivity:	Human, Mouse, Rat, Dog, Cow, Guinea Pig, Horse, Zebrafish (Danio rerio), Monkey, Pig, Bat, Chicken, Xenopus laevis
Host:	Rabbit
Clonality:	Polyclonal
Conjugate:	This MID1 antibody is un-conjugated
Application:	Western Blotting (WB)

Product Details

Immunogen:	Synthetic peptide located between aa465-514 of human MID1 (O15344, NP_000372). Percent identity by BLAST analysis: Human, Chimpanzee, Gorilla, Orangutan, Gibbon, Monkey, Galago, Marmoset, Mouse, Rat, Elephant, Panda, Dog, Bovine, Bat, Horse, Pig, Opossum, Guinea pig, Turkey, Zebra finch, Chicken, Platypus, Lizard, Xenopus, Zebrafish (100%). Type of Immunogen: Synthetic peptide
Isotype:	IgG
Specificity:	Human MID1
Predicted Reactivity:	Percent identity by BLAST analysis: Human, Mouse, Rat, Dog, Bovine, Horse, Pig, Guinea pig, Chicken, Xenopus, Zebrafish (100%).

Product Details

Purification: Protein A purified

Target Details

Target: MID1

Alternative Name: OSX / MID1 ([MID1 Products](#))

Background: Name/Gene ID: MID1

Synonyms: MID1, GBBB1, Midline 1 RING finger protein, MIDIN, RING finger protein 59, RNF59, Midline 1 (Opitz/BBB syndrome), TRIM18, OGS1, ZNFXY, BBBG1, XPRF, FXY, Midline-1, OS, OSX

Gene ID: 4281

NCBI Accession: [NP_000372](#)

UniProt: [O15344](#)

Application Details

Application Notes: Approved: WB (2.5 µg/mL)

Comment: Target Species of Antibody: Human

Restrictions: For Research Use only

Handling

Format: Lyophilized

Reconstitution: After adding water, will consist of PBS buffer with 2 % sucrose

Concentration: Lot specific

Buffer: Lyophilized from PBS with 2 % sucrose

Handling Advice: Avoid repeated freezing and thawing.

Storage: 4 °C, -20 °C

Storage Comment: Long term: -20°C, the use of 50% glycerol is recommended if storing aliquots in -20°C for long term use (up to 1 year)

Short term (less than 1 week): 4°C. Avoid freeze-thaw cycles.

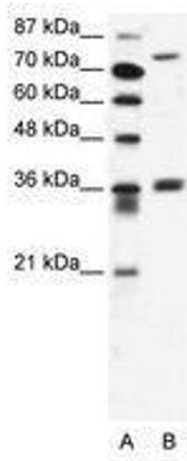


Image 1.