



Datasheet for ABIN203245
anti-RED1 antibody (AA 40-89)



[Go to Product page](#)

1 Image

Overview

Quantity:	100 µL
Target:	RED1 (ADARB1)
Binding Specificity:	AA 40-89
Reactivity:	Human, Rat, Mouse, Cow, Guinea Pig, Hamster, Pig
Host:	Rabbit
Clonality:	Polyclonal
Conjugate:	This RED1 antibody is un-conjugated
Application:	Western Blotting (WB)

Product Details

Immunogen: Synthetic peptide located between aa40-89 of human ADARB1 (Q4AE79, NP_001103). Percent identity by BLAST analysis: Human, Chimpanzee, Gorilla, Gibbon, Mouse, Rat, Hamster, Elephant, Pig, Guinea pig (100%), Monkey, Panda, Dog, Rabbit, Horse, Turkey, Zebra finch, Chicken, Platypus, Lizard, Xenopus, Zebrafish (92%), Galago (91%), Marmoset, Bat (85%), Bovine, Opossum, Seabass (83%), Pufferfish (81%).

Type of Immunogen: Synthetic peptide

Isotype:	IgG
Specificity:	Human ADARB1 / RED1
Predicted Reactivity:	Percent identity by BLAST analysis: Human, Mouse, Rat, Pig, Guinea pig (100%) Dog, Rabbit, Chicken, Xenopus (92%).

Product Details

Purification: Protein A purified

Target Details

Target: RED1 (ADARB1)

Alternative Name: ADAR2 / ADARB1 ([ADARB1 Products](#))

Background: Name/Gene ID: ADARB1

Synonyms: ADARB1, ADAR2a-L3, ADAR2, ADAR2g, ADAR2a, ADAR2a-L2, ADAR2d, DsRNA adenosine deaminase, DRABA2, DRADA2, ADAR2a-L1, ADAR2b, ADAR2c, HRED1, RED1, RNA editase, RED1 homolog, RNA editing deaminase 1, RNA-editing deaminase 1, RNA-editing enzyme 1

Gene ID: 104

NCBI Accession: [NP_001103](#)

UniProt: [P78563](#)

Application Details

Application Notes: Approved: WB (1.25 µg/mL)

Comment: Target Species of Antibody: Human

Restrictions: For Research Use only

Handling

Format: Lyophilized

Reconstitution: After adding water, will consist of PBS buffer with 2 % sucrose

Concentration: Lot specific

Buffer: Lyophilized from PBS with 2 % sucrose

Handling Advice: Avoid repeat freeze-thaw cycles.

Storage: 4 °C, -20 °C

Storage Comment: Long term: -20°C, the use of 50% glycerol is recommended if storing aliquots in -20°C for long term use (up to 1 year)

Short term (less than 1 week): 4°C. Avoid freeze-thaw cycles.

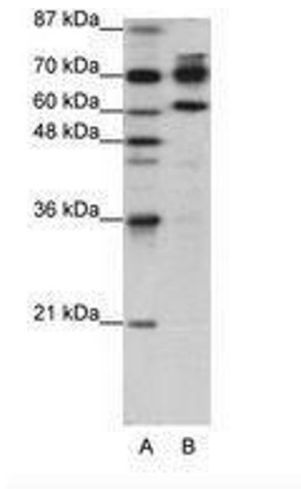


Image 1.