



Datasheet for ABIN203252  
**anti-TAF1C antibody (C-Term)**



[Go to Product page](#)

1 Image

Overview

Quantity:	100 µL
Target:	TAF1C
Binding Specificity:	C-Term
Reactivity:	Human
Host:	Rabbit
Clonality:	Polyclonal
Conjugate:	This TAF1C antibody is un-conjugated
Application:	Western Blotting (WB)

Product Details

Immunogen:	Synthetic peptide from C-Terminus of human TAF1C (Q15572-2, NP_647610). Percent identity by BLAST analysis: Human (100%), Gibbon (85%), Monkey (84%).  Type of Immunogen: Synthetic peptide
Isotype:	IgG
Specificity:	Human TAF1C
Predicted Reactivity:	Percent identity by BLAST analysis: Human (100%).
Purification:	Protein A purified

Target Details

Target:	TAF1C
---------	-------

## Target Details

---

Alternative Name: TAF1C ([TAF1C Products](#))

Background: Name/Gene ID: TAF1C

Synonyms: TAF1C, MGC:39976, SL1, 110kD subunit, TBP-associated factor 1C, TAFI110,  
Transcription factor SL1, SL1, TAFI95

Gene ID: 9013

NCBI Accession: [NP\\_647610](#)

UniProt: [Q15572](#)

## Application Details

---

Application Notes: Approved: WB (2.5 µg/mL)

Comment: Target Species of Antibody: Human

Restrictions: For Research Use only

## Handling

---

Format: Lyophilized

Reconstitution: After adding water, will consist of PBS buffer with 2 % sucrose

Concentration: Lot specific

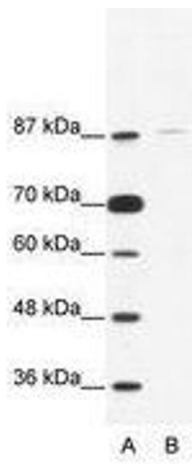
Buffer: Lyophilized from PBS with 2 % sucrose

Handling Advice: Avoid repeat freeze-thaw cycles.

Storage: 4 °C, -20 °C

Storage Comment: Long term: -20°C, the use of 50% glycerol is recommended if storing aliquots in -20°C for long term use (up to 1 year)

Short term (less than 1 week): 4°C. Avoid freeze-thaw cycles.



**Image 1.**