



[Go to Product page](#)

Datasheet for ABIN203253
anti-GLIS3 antibody (N-Term)

1 Image

Overview

Quantity:	100 µL
Target:	GLIS3
Binding Specificity:	N-Term
Reactivity:	Human, Guinea Pig, Horse, Monkey
Host:	Rabbit
Clonality:	Polyclonal
Conjugate:	This GLIS3 antibody is un-conjugated
Application:	Western Blotting (WB)

Product Details

Immunogen:	Synthetic peptide from N-Terminus of human GLIS3 (Q8NEA6, NP_689842). Percent identity by BLAST analysis: Human, Chimpanzee, Gibbon, Galago, Marmoset, Panda, Horse, Guinea pig, Lizard (100%), Mouse (92%), Opossum (85%). Type of Immunogen: Synthetic peptide
Isotype:	IgG
Specificity:	Human GLIS3
Predicted Reactivity:	Percent identity by BLAST analysis: Human, Horse (100%) Mouse (92%).
Purification:	Protein A purified

Target Details

Target:	GLIS3
Alternative Name:	GLIS3 (GLIS3 Products)
Background:	Name/Gene ID: GLIS3 Family: Zinc Finger Synonyms: GLIS3, GLIS family zinc finger 3, OK/KNS-cl.4, Zinc finger protein 515, Zinc finger protein GLIS3, GLI-similar 3, ZNF515
Gene ID:	169792
NCBI Accession:	NP_689842
UniProt:	Q8NEA6

Application Details

Application Notes:	Approved: WB (2.5 µg/mL)
Comment:	Target Species of Antibody: Human
Restrictions:	For Research Use only

Handling

Format:	Lyophilized
Reconstitution:	After adding water, will consist of PBS buffer with 2 % sucrose
Concentration:	Lot specific
Buffer:	Lyophilized from PBS with 2 % sucrose
Handling Advice:	Avoid repeat freeze-thaw cycles.
Storage:	4 °C,-20 °C
Storage Comment:	Long term: -20°C, the use of 50% glycerol is recommended if storing aliquots in -20°C for long term use (up to 1 year) Short term (less than 1 week): 4°C. Avoid freeze-thaw cycles.

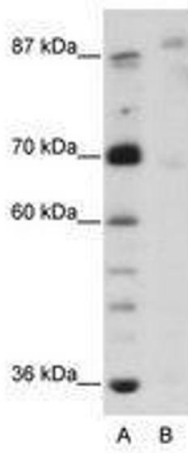


Image 1.