

Datasheet for ABIN203269  
**anti-KCNN2 antibody (AA 443-492)**[Go to Product page](#)

## 1 Image

## Overview

Quantity:	100 µL
Target:	KCNN2
Binding Specificity:	AA 443-492
Reactivity:	Human, Mouse, Rat, Cow, Guinea Pig, Horse, Rabbit, Pig
Host:	Rabbit
Clonality:	Polyclonal
Conjugate:	This KCNN2 antibody is un-conjugated
Application:	Western Blotting (WB)

## Product Details

Immunogen:	Synthetic peptide located between aa443-492 of human KCNN2 (Q9H2S1, NP_067627). Percent identity by BLAST analysis: Human, Chimpanzee, Gorilla, Gibbon, Marmoset, Mouse, Rat, Bovine, Rabbit, Horse, Pig, Guinea pig (100%), Orangutan, Monkey, Galago, Elephant, Panda, Dog, Bat, Turkey, Zebra finch, Chicken, Platypus, Xenopus, Zebrafish (92%), Opossum, Trout, Stickleback (85%).  Type of Immunogen: Synthetic peptide
Isotype:	IgG
Specificity:	Human KCNN2
Predicted Reactivity:	Percent identity by BLAST analysis: Human, Mouse, Rat, Dog, Bovine, Rabbit, Horse, Pig, Chicken (92%).

## Product Details

Purification: Protein A purified

## Target Details

Target: KCNN2

Alternative Name: KCNN2 ([KCNN2 Products](#))

Background: Name/Gene ID: KCNN2  
Subfamily: Potassium channel - calcium-activated  
Family: Ion Channel  
  
Synonyms: KCNN2, HSK2, KCa2.2, Sk2, SKCA2, SKCa 2

Gene ID: 3781

NCBI Accession: [NP\\_067627](#)

UniProt: [Q9H2S1](#)

## Application Details

Application Notes: Approved: WB (1.25 µg/mL)

Comment: Target Species of Antibody: Human

Restrictions: For Research Use only

## Handling

Format: Lyophilized

Reconstitution: After adding water, will consist of PBS buffer with 2 % sucrose

Concentration: Lot specific

Buffer: Lyophilized from PBS with 2 % sucrose

Handling Advice: Avoid repeat freeze-thaw cycles.

Storage: 4 °C, -20 °C

Storage Comment: Long term: -20°C, the use of 50% glycerol is recommended if storing aliquots in -20°C for long term use (up to 1 year)  
Short term (less than 1 week): 4°C. Avoid freeze-thaw cycles.

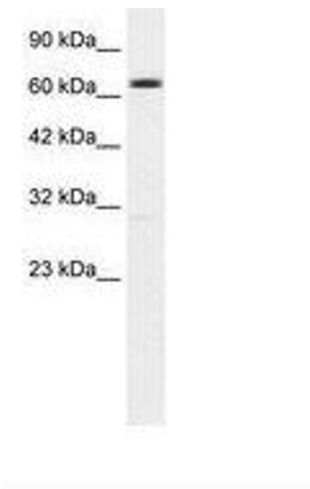


Image 1.