



[Go to Product page](#)

Datasheet for ABIN203282  
**anti-TAF6L antibody (N-Term)**

1 Image

Overview

Quantity:	100 µL
Target:	TAF6L
Binding Specificity:	N-Term
Reactivity:	Human, Mouse, Rat, Cow, Dog, Guinea Pig, Rabbit, Horse, Zebrafish (Danio rerio), Pig, Monkey, Bat
Host:	Rabbit
Clonality:	Polyclonal
Conjugate:	This TAF6L antibody is un-conjugated
Application:	Western Blotting (WB)

Product Details

Immunogen:	Synthetic peptide from N-Terminus of human TAF6L (Q9Y6J9, NP_006464). Percent identity by BLAST analysis: Human, Chimpanzee, Gorilla, Gibbon, Monkey, Galago, Marmoset, Mouse, Rat, Elephant, Panda, Dog, Bovine, Bat, Rabbit, Horse, Pig, Opossum, Guinea pig (100%), Zebrafish (85%), Salmon (83%).  Type of Immunogen: Synthetic peptide
Isotype:	IgG
Specificity:	Human TAF6L
Predicted Reactivity:	Percent identity by BLAST analysis: Human, Mouse, Rat, Dog, Bovine, Rabbit, Horse, Guinea pig (100%) Zebrafish (85%).

## Product Details

---

Purification: Protein A purified

## Target Details

---

Target: TAF6L

Alternative Name: TAF6L ([TAF6L Products](#))

Background: Name/Gene ID: TAF6L

Synonyms: TAF6L, PAF65-alpha, PAF65A

Gene ID: 10629

NCBI Accession: [NP\\_006464](#)

UniProt: [Q9Y6J9](#)

## Application Details

---

Application Notes: Approved: WB (5 µg/mL)

Comment: Target Species of Antibody: Human

Restrictions: For Research Use only

## Handling

---

Format: Lyophilized

Reconstitution: After adding water, will consist of PBS buffer with 2 % sucrose

Concentration: Lot specific

Buffer: Lyophilized from PBS with 2 % sucrose

Handling Advice: Avoid repeat freeze-thaw cycles.

Storage: 4 °C,-20 °C

Storage Comment: Long term: -20°C, the use of 50% glycerol is recommended if storing aliquots in -20°C for long term use (up to 1 year)

Short term (less than 1 week): 4°C. Avoid freeze-thaw cycles.

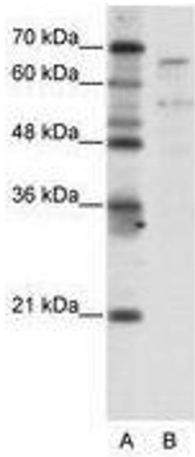


Image 1.