

Datasheet for ABIN203288
anti-ARIH2 antibody (N-Term)



[Go to Product page](#)

2 Images

Overview

Quantity:	100 µL
Target:	ARIH2
Binding Specificity:	N-Term
Reactivity:	Human, Mouse, Rat, Dog, Horse, Rabbit, Guinea Pig, Pig, Bat, Monkey
Host:	Rabbit
Clonality:	Polyclonal
Conjugate:	This ARIH2 antibody is un-conjugated
Application:	Western Blotting (WB), Immunohistochemistry (IHC), Immunohistochemistry (Paraffin-embedded Sections) (IHC (p))

Product Details

Immunogen:	Synthetic peptide from N-Terminus of human ARIH2 (O95376, NP_006312). Percent identity by BLAST analysis: Human, Gorilla, Gibbon, Galago, Marmoset, Mouse, Rat, Elephant, Panda, Dog, Bat, Rabbit, Horse, Pig, Guinea pig (100%), Bovine, Turkey, Zebra finch, Chicken, Platypus, Lizard, Stickleback (92%), Xenopus (85%). Type of Immunogen: Synthetic peptide
Isotype:	IgG
Specificity:	Human ARIH2
Predicted Reactivity:	Percent identity by BLAST analysis: Human, Mouse, Rat, Dog, Rabbit, Horse, Pig, Guinea pig (100%) Bovine, Chicken (92%) Xenopus (85%).

Product Details

Purification: Protein A purified

Target Details

Target: ARIH2

Alternative Name: ARIH2 ([ARIH2 Products](#))

Background: Name/Gene ID: ARIH2

Synonyms: ARIH2, Ariadne homolog 2 (Drosophila), ARI-2, ARI2, Protein ariadne-2 homolog, TRIAD1, Triad1 protein, Ariadne (Drosophila) homolog 2

Gene ID: 10425

NCBI Accession: [NP_006312](#)

UniProt: [O95376](#)

Application Details

Application Notes: Approved: IHC, IHC-P, WB (2.5 µg/mL)

Comment: Target Species of Antibody: Human

Restrictions: For Research Use only

Handling

Format: Lyophilized

Reconstitution: After adding water, will consist of PBS buffer with 2 % sucrose

Concentration: Lot specific

Buffer: Lyophilized from PBS with 2 % sucrose

Handling Advice: Avoid repeat freeze-thaw cycles.

Storage: 4 °C, -20 °C

Storage Comment: Long term: -20°C, the use of 50% glycerol is recommended if storing aliquots in -20°C for long term use (up to 1 year)

Short term (less than 1 week): 4°C. Avoid freeze-thaw cycles.

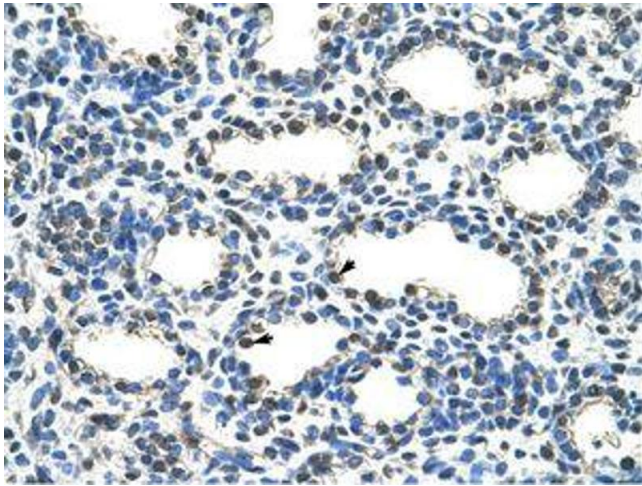


Image 1.



Image 2.