

Datasheet for ABIN203291  
**anti-CBX3 antibody (AA 71-120)**



[Go to Product page](#)

2 Images

## Overview

Quantity:	100 µL
Target:	CBX3
Binding Specificity:	AA 71-120
Reactivity:	Human, Mouse, Rat, Dog, Cow, Guinea Pig, Horse, Rabbit, Monkey, Chicken, Hamster, Bat, Pig
Host:	Rabbit
Clonality:	Polyclonal
Conjugate:	This CBX3 antibody is un-conjugated
Application:	Western Blotting (WB), Immunohistochemistry (IHC), Immunohistochemistry (Paraffin-embedded Sections) (IHC (p))

## Product Details

Immunogen:	Synthetic peptide located between aa71-120 of human CBX3 (Q13185, NP_057671). Percent identity by BLAST analysis: Human, Chimpanzee, Gorilla, Orangutan, Gibbon, Monkey, Marmoset, Mouse, Rat, Hamster, Elephant, Panda, Dog, Bovine, Bat, Rabbit, Horse, Pig, Guinea pig, Turkey, Zebra finch, Chicken (100%), Opossum (92%), Platypus, Xenopus (85%).  Type of Immunogen: Synthetic peptide
Isotype:	IgG
Specificity:	Human CBX3
Predicted Reactivity:	Percent identity by BLAST analysis: Human, Mouse, Rat, Dog, Bovine, Horse, Pig, Chicken (100%) Xenopus (85%).

## Product Details

---

Purification: Protein A purified

## Target Details

---

Target: CBX3

Alternative Name: CBX3 / HP1 Gamma ([CBX3 Products](#))

Background: Name/Gene ID: CBX3

Synonyms: CBX3, Chromobox homolog 3, HP1Hs-gamma, Heterochromatin-like protein 1, Modifier 2 protein, HP1-GAMMA, Chromobox protein homolog 3, HECH, HP1 gamma, HP1 gamma homolog

Gene ID: 11335

NCBI Accession: [NP\\_057671](#)

UniProt: [Q13185](#)

## Application Details

---

Application Notes: Approved: IHC, IHC-P, WB (1.25 µg/mL)

Comment: Target Species of Antibody: Human

Restrictions: For Research Use only

## Handling

---

Format: Lyophilized

Reconstitution: After adding water, will consist of PBS buffer with 2 % sucrose

Concentration: Lot specific

Buffer: Lyophilized from PBS with 2 % sucrose

Handling Advice: Avoid repeat freeze-thaw cycles.

Storage: 4 °C, -20 °C

Storage Comment: Long term: -20°C, the use of 50% glycerol is recommended if storing aliquots in -20°C for long term use (up to 1 year)  
Short term (less than 1 week): 4°C. Avoid freeze-thaw cycles.

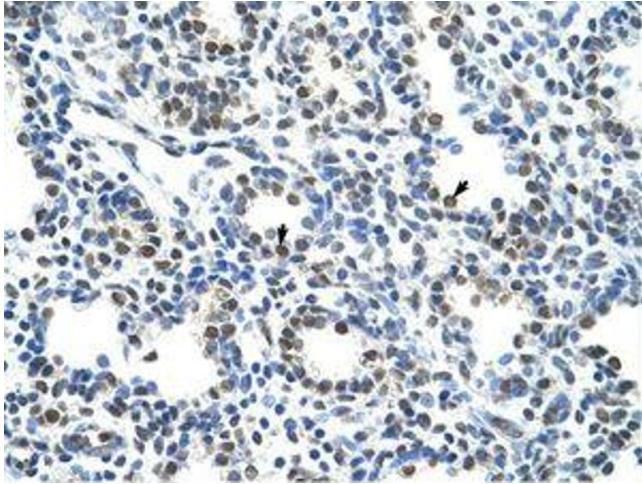


Image 1.

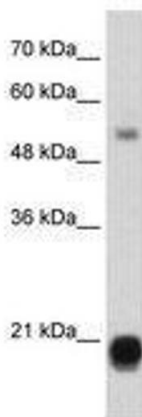


Image 2.