

Datasheet for ABIN203293
anti-PSIP1 antibody (AA 85-134)



[Go to Product page](#)

1 Image

Overview

Quantity:	100 µL
Target:	PSIP1
Binding Specificity:	AA 85-134
Reactivity:	Human, Rat, Mouse, Monkey, Dog, Horse, Cow, Rabbit, Sheep, Pig, Bat
Host:	Rabbit
Clonality:	Polyclonal
Conjugate:	This PSIP1 antibody is un-conjugated
Application:	Western Blotting (WB)

Product Details

Immunogen:	Synthetic peptide located between aa85-134 of human PSIP1 (O75475-2, NP_066967). Percent identity by BLAST analysis: Human, Chimpanzee, Gorilla, Gibbon, Galago, Marmoset, Rat, Sheep, Elephant, Panda, Dog, Cat, Bovine, Bat, Rabbit, Horse, Pig (100%), Guinea pig (92%), Mouse, Opossum (85%). Type of Immunogen: Synthetic peptide
Isotype:	IgG
Specificity:	Human PSIP1
Predicted Reactivity:	Percent identity by BLAST analysis: Human, Sheep, Dog, Bovine, Rabbit, Horse, Pig (100%) Rat (92%) Mouse (85%).
Purification:	Protein A purified

Target Details

Target:	PSIP1
Alternative Name:	PSIP1 / LEDGF / p75 (PSIP1 Products)
Background:	Name/Gene ID: PSIP1 Synonyms: PSIP1, DFS 70, DFS70, p52, p75, LEDGF, PSIP2, CLL-associated antigen KW-7, PAIP
Gene ID:	11168
NCBI Accession:	NP_066967
UniProt:	O75475
Pathways:	Chromatin Binding, Ribonucleoprotein Complex Subunit Organization

Application Details

Application Notes:	Approved: WB (1.25 µg/mL)
Comment:	Target Species of Antibody: Human
Restrictions:	For Research Use only

Handling

Format:	Lyophilized
Reconstitution:	After adding water, will consist of PBS buffer with 2 % sucrose
Concentration:	Lot specific
Buffer:	Lyophilized from PBS with 2 % sucrose
Handling Advice:	Avoid repeat freeze-thaw cycles.
Storage:	4 °C, -20 °C
Storage Comment:	Long term: -20°C, the use of 50% glycerol is recommended if storing aliquots in -20°C for long term use (up to 1 year) Short term (less than 1 week): 4°C. Avoid freeze-thaw cycles.

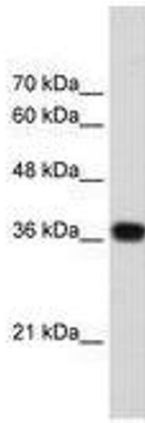


Image 1.