



[Go to Product page](#)

Datasheet for ABIN203299

anti-RPL8 antibody (AA 155-204)

2 Images

Overview

Quantity:	100 µL
Target:	RPL8
Binding Specificity:	AA 155-204
Reactivity:	Human, Mouse, Rat, Dog, Zebrafish (Danio rerio), Cow, Rabbit, Guinea Pig, Bat, Chicken, Hamster, Monkey, Pig, Xenopus laevis
Host:	Rabbit
Clonality:	Polyclonal
Conjugate:	This RPL8 antibody is un-conjugated
Application:	Western Blotting (WB), Immunohistochemistry (IHC), Immunohistochemistry (Paraffin-embedded Sections) (IHC (p))

Product Details

Immunogen:	Synthetic peptide located between aa155-204 of human RPL8 (P62917, NP_000964). Percent identity by BLAST analysis: Human, Chimpanzee, Gorilla, Orangutan, Gibbon, Monkey, Galago, Marmoset, Mouse, Rat, Hamster, Elephant, Panda, Dog, Bovine, Bat, Rabbit, Pig, Opossum, Guinea pig, Turkey, Zebra finch, Chicken, Platypus, Lizard, Xenopus, Salmon, Smelt, Stickleback, Medaka, Zebrafish (100%), Catfish, Sea squirt, Drosophila, Mosquito, Nematode, Beetle, Arabidopsis (92%). Type of Immunogen: Synthetic peptide
Isotype:	IgG
Specificity:	Human RPL8

Product Details

Predicted Reactivity:	Percent identity by BLAST analysis: Human, Mouse, Dog, Pig, Chicken, Zebrafish (100%) Bovine (92%).
Purification:	Protein A purified

Target Details

Target:	RPL8
Alternative Name:	RPL8 / L8 (RPL8 Products)
Background:	Name/Gene ID: RPL8 Synonyms: RPL8, 60S ribosomal protein L8, Ribosomal protein L8, L8
Gene ID:	6132
NCBI Accession:	NP_000964
UniProt:	P62917
Pathways:	Regulation of Cell Size

Application Details

Application Notes:	Approved: IHC, IHC-P, WB (0.31 µg/mL)
Comment:	Target Species of Antibody: Human
Restrictions:	For Research Use only

Handling

Format:	Lyophilized
Reconstitution:	After adding water, will consist of PBS buffer with 2 % sucrose
Concentration:	Lot specific
Buffer:	Lyophilized from PBS with 2 % sucrose
Handling Advice:	Avoid repeat freeze-thaw cycles.
Storage:	4 °C,-20 °C
Storage Comment:	Long term: -20°C, the use of 50% glycerol is recommended if storing aliquots in -20°C for long term use (up to 1 year)

Handling

Short term (less than 1 week): 4°C. Avoid freeze-thaw cycles.

Images

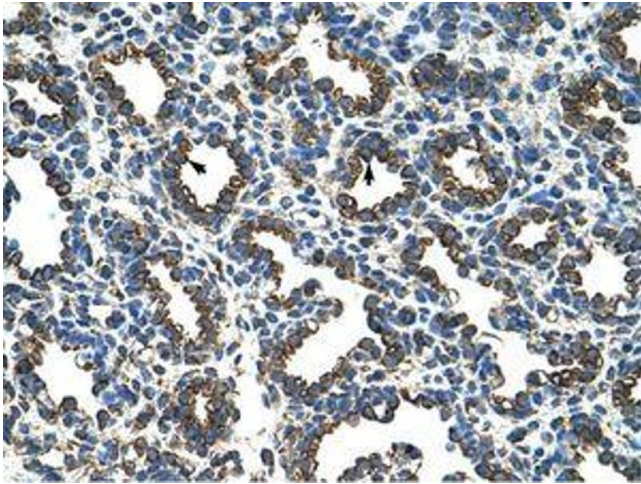


Image 1.

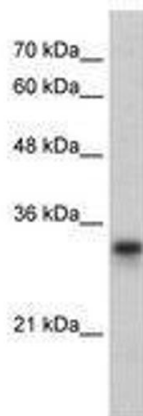


Image 2.