



Datasheet for ABIN203302 **anti-RPLP0 antibody (AA 182-231)**



[Go to Product page](#)

1 Image

Overview

Quantity:	100 µL
Target:	RPLP0
Binding Specificity:	AA 182-231
Reactivity:	Human, Mouse, Dog, Cow, Guinea Pig, Horse, Zebrafish (Danio rerio), Monkey, Pig
Host:	Rabbit
Clonality:	Polyclonal
Conjugate:	This RPLP0 antibody is un-conjugated
Application:	Western Blotting (WB)

Product Details

Immunogen:	Synthetic peptide located between aa182-231 of human RPLP0 (P05388, NP_000993). Percent identity by BLAST analysis: Human, Gorilla, Gibbon, Monkey, Marmoset, Elephant, Panda, Dog, Bovine, Horse, Pig, Guinea pig (100%), Rabbit, Opossum, Turkey, Zebra finch, Chicken (92%), Mouse, Platypus, Xenopus (85%), Rat (78%). Type of Immunogen: Synthetic peptide
Isotype:	IgG
Specificity:	Human RPLP0
Predicted Reactivity:	Percent identity by BLAST analysis: Human, Dog, Bovine, Horse (100%) Chicken (92%) Mouse, Xenopus (85%).
Purification:	Protein A purified

Target Details

Target:	RPLP0
Alternative Name:	RPLP0 / P0 (RPLP0 Products)
Background:	Name/Gene ID: RPLP0 Synonyms: RPLP0, 60S ribosomal protein L10E, LP0, PRLP0, p0, Ribosomal protein, large, P0, L10E, Ribosomal protein p0, acidic, RPP0
Gene ID:	6175
NCBI Accession:	NP_000993
UniProt:	P05388

Application Details

Application Notes:	Approved: WB (2.5 µg/mL)
Comment:	Target Species of Antibody: Human
Restrictions:	For Research Use only

Handling

Format:	Lyophilized
Reconstitution:	Distilled Water.
Concentration:	Lot specific
Buffer:	Lyophilized from PBS with 2 % sucrose
Handling Advice:	Avoid repeat freeze-thaw cycles.
Storage:	4 °C, -20 °C
Storage Comment:	Long term: -20°C, the use of 50% glycerol is recommended if storing aliquots in -20°C for long term use (up to 1 year) Short term (less than 1 week): 4°C. Avoid freeze-thaw cycles.

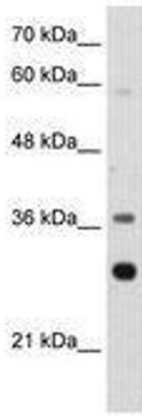


Image 1.