

Datasheet for ABIN203312
anti-RASSF7 antibody (AA 161-210)



[Go to Product page](#)

2 Images

Overview

Quantity:	100 µL
Target:	RASSF7
Binding Specificity:	AA 161-210
Reactivity:	Human, Mouse, Rat, Dog, Horse, Pig, Monkey
Host:	Rabbit
Clonality:	Polyclonal
Conjugate:	This RASSF7 antibody is un-conjugated
Application:	Western Blotting (WB), Immunohistochemistry (IHC), Immunohistochemistry (Paraffin-embedded Sections) (IHC (p))

Product Details

Immunogen:	Synthetic peptide located between aa161-210 of human RASSF7 (Q02833, NP_003466). Percent identity by BLAST analysis: Human, Chimpanzee, Gorilla, Gibbon, Monkey, Galago, Marmoset, Mouse, Rat, Elephant, Panda, Dog, Horse, Pig (100%), Bovine, Guinea pig (92%). Type of Immunogen: Synthetic peptide
Isotype:	IgG
Specificity:	Human RASSF7
Predicted Reactivity:	Percent identity by BLAST analysis: Human, Mouse, Rat, Dog, Pig (100%) Bovine (92%).
Purification:	Protein A purified

Target Details

Target: RASSF7

Alternative Name: RASSF7 ([RASSF7 Products](#))

Background: Name/Gene ID: RASSF7

Synonyms: RASSF7, C11orf13, HRAS1, HRAS1-related cluster-1, HRC1

Gene ID: 8045

NCBI Accession: [NP_003466](#)

UniProt: [Q02833](#)

Application Details

Application Notes: Approved: IHC, IHC-P, WB (5 µg/mL)

Comment: Target Species of Antibody: Human

Restrictions: For Research Use only

Handling

Format: Lyophilized

Reconstitution: After adding water, will consist of PBS buffer with 2 % sucrose

Concentration: Lot specific

Buffer: Lyophilized from PBS with 2 % sucrose

Handling Advice: Avoid repeat freeze-thaw cycles.

Storage: 4 °C, -20 °C

Storage Comment: Long term: -20°C, the use of 50% glycerol is recommended if storing aliquots in -20°C for long term use (up to 1 year)

Short term (less than 1 week): 4°C. Avoid freeze-thaw cycles.

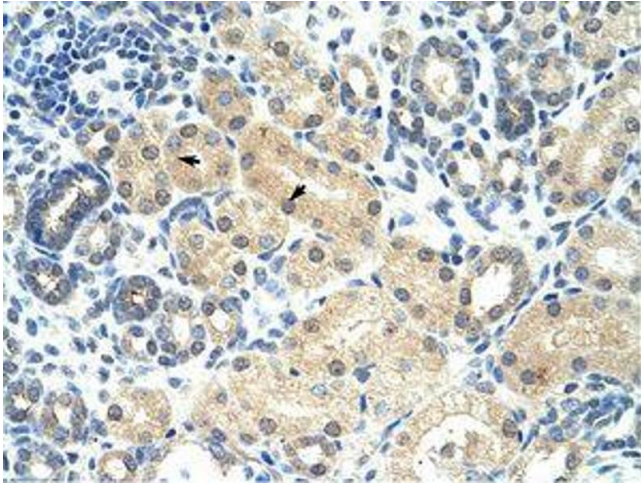


Image 1.

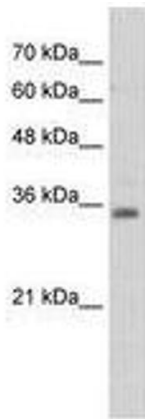


Image 2.