



Datasheet for ABIN203314
anti-KLHL25 antibody (AA 163-212)



[Go to Product page](#)

2 Images

Overview

Quantity:	100 µL
Target:	KLHL25
Binding Specificity:	AA 163-212
Reactivity:	Human, Dog, Rabbit, Pig, Chicken, Hamster
Host:	Rabbit
Clonality:	Polyclonal
Conjugate:	This KLHL25 antibody is un-conjugated
Application:	Western Blotting (WB), Immunohistochemistry (IHC), Immunohistochemistry (Paraffin-embedded Sections) (IHC (p))

Product Details

Immunogen:	Synthetic peptide located between aa163-212 of human KLHL25 (Q9H0H3, NP_071925). Percent identity by BLAST analysis: Human, Chimpanzee, Gorilla, Gibbon, Monkey, Galago, Hamster, Panda, Dog, Pig, Opossum, Turkey, Zebra finch, Chicken (100%), Marmoset, Elephant, Bovine, Guinea pig, Platypus, Xenopus (92%), Mouse, Rat, Bat, Rabbit (85%). Type of Immunogen: Synthetic peptide
Isotype:	IgG
Specificity:	Human KLHL25
Predicted Reactivity:	Percent identity by BLAST analysis: Human, Dog, Chicken (100%) Bovine (92%) Rabbit (85%).
Purification:	Protein A purified

Target Details

Target:	KLHL25
Alternative Name:	KLHL25 (KLHL25 Products)
Background:	Name/Gene ID: KLHL25 Synonyms: KLHL25, BTB/POZ KELCH domain protein, ENC-2, Ectodermal-neural cortex 2, ENC2, Kelch-like protein 25, Kelch-like 25 (Drosophila)
Gene ID:	64410
NCBI Accession:	NP_071925
UniProt:	Q9H0H3

Application Details

Application Notes:	Approved: IHC, IHC-P, WB (0.31 µg/mL)
Comment:	Target Species of Antibody: Human
Restrictions:	For Research Use only

Handling

Format:	Lyophilized
Reconstitution:	After adding water, will consist of PBS buffer with 2 % sucrose
Concentration:	Lot specific
Buffer:	Lyophilized from PBS with 2 % sucrose
Handling Advice:	Avoid repeat freeze-thaw cycles.
Storage:	4 °C, -20 °C
Storage Comment:	Long term: -20°C, the use of 50% glycerol is recommended if storing aliquots in -20°C for long term use (up to 1 year) Short term (less than 1 week): 4°C. Avoid freeze-thaw cycles.

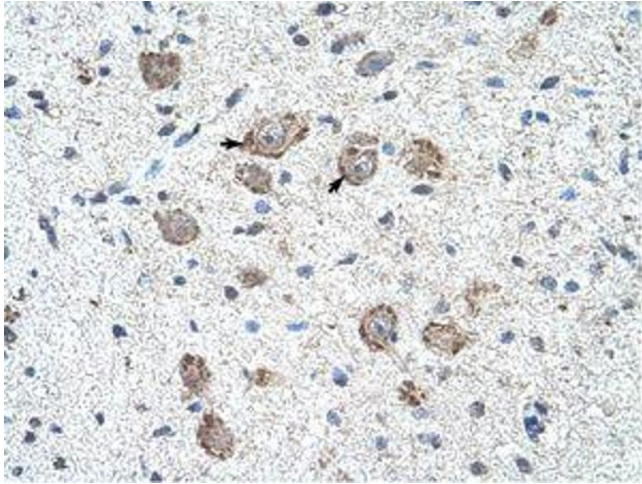


Image 1.

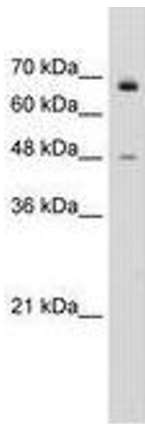


Image 2.