



[Go to Product page](#)

Datasheet for ABIN203317
anti-GABRG2 antibody (AA 334-383)

1 Image

Overview

Quantity:	100 µL
Target:	GABRG2
Binding Specificity:	AA 334-383
Reactivity:	Human, Rat, Mouse, Cow, Rabbit, Dog, Pig, Horse, Chicken, Guinea Pig, Monkey, Zebrafish (Danio rerio), Bat
Host:	Rabbit
Clonality:	Polyclonal
Conjugate:	This GABRG2 antibody is un-conjugated
Application:	Western Blotting (WB)

Product Details

Immunogen:	Synthetic peptide located between aa334-383 of human GABRG2 (P18507, NP_944493). Percent identity by BLAST analysis: Human, Gorilla, Orangutan, Gibbon, Monkey, Galago, Marmoset, Mouse, Rat, Elephant, Dog, Cat, Bovine, Bat, Rabbit, Horse, Pig, Opossum, Guinea pig, Turkey, Zebra finch, Chicken, Platypus, Lizard (100%), Xenopus (92%), Stickleback, Zebrafish (85%). Type of Immunogen: Synthetic peptide
Isotype:	IgG
Specificity:	Human GABRG2
Predicted Reactivity:	Percent identity by BLAST analysis: Human, Mouse, Rat, Dog, Bovine, Rabbit, Horse, Pig,

Product Details

Chicken (100%) Zebrafish (85%).

Purification: Protein A purified

Target Details

Target: GABRG2

Alternative Name: GABRG2 ([GABRG2 Products](#))

Background: Name/Gene ID: GABRG2
Subfamily: GABA A receptor
Family: Ion Channel

Synonyms: GABRG2, CAE2, GABA A receptor gamma 2, GEFSP3, ECA2, GABA(A) receptor, gamma 2

Gene ID: 2566

NCBI Accession: [NP_944493](#)

UniProt: [P18507](#)

Application Details

Application Notes: Approved: WB (1.25 µg/mL)

Comment: Target Species of Antibody: Human

Restrictions: For Research Use only

Handling

Format: Lyophilized

Reconstitution: After adding water, will consist of PBS buffer with 2 % sucrose

Concentration: Lot specific

Buffer: Lyophilized from PBS with 2 % sucrose

Handling Advice: Avoid repeat freeze-thaw cycles.

Storage: 4 °C,-20 °C

Storage Comment: Long term: -20°C, the use of 50% glycerol is recommended if storing aliquots in -20°C for long term use (up to 1 year)

Handling

Short term (less than 1 week): 4°C. Avoid freeze-thaw cycles.

Images

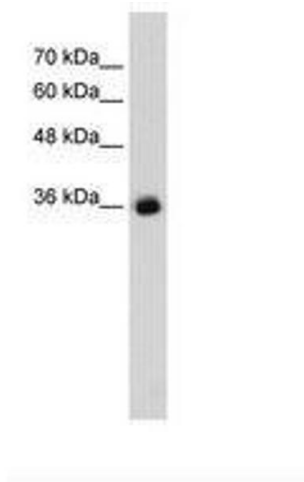


Image 1.