



[Go to Product page](#)

Datasheet for ABIN203327  
**anti-MTA2 antibody (C-Term)**

1 Image

Overview

Quantity:	100 µL
Target:	MTA2
Binding Specificity:	C-Term
Reactivity:	Human, Mouse, Rat, Dog, Cow, Horse, Rabbit, Guinea Pig, Pig, Bat, Monkey
Host:	Rabbit
Clonality:	Polyclonal
Conjugate:	This MTA2 antibody is un-conjugated
Application:	Western Blotting (WB)

Product Details

Immunogen:	Synthetic peptide from C-Terminus of human MTA2 (O94776, NP_004730). Percent identity by BLAST analysis: Human, Chimpanzee, Gorilla, Orangutan, Gibbon, Monkey, Galago, Marmoset, Mouse, Rat, Elephant, Dog, Bovine, Bat, Rabbit, Horse, Pig, Opossum, Guinea pig (100%), Goat (92%), Xenopus (80%).  Type of Immunogen: Synthetic peptide
Isotype:	IgG
Specificity:	Human MTA2
Predicted Reactivity:	Percent identity by BLAST analysis: Human, Mouse, Rat, Dog, Bovine, Rabbit, Horse, Pig (100%) Goat (92%).
Purification:	Protein A purified

## Target Details

---

Target:	MTA2
Alternative Name:	MTA2 ( <a href="#">MTA2 Products</a> )
Background:	Name/Gene ID: MTA2  Synonyms: MTA2, Metastasis-associated 1-like 1, MTA1L1, PID, MTA1-L1, MTA1-L1 protein
Gene ID:	9219
NCBI Accession:	<a href="#">NP_004730</a>
UniProt:	<a href="#">O94776</a>
Pathways:	<a href="#">Chromatin Binding</a>

## Application Details

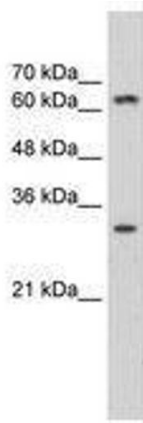
---

Application Notes:	Approved: WB (1.25 µg/mL)
Comment:	Target Species of Antibody: Human
Restrictions:	For Research Use only

## Handling

---

Format:	Lyophilized
Reconstitution:	After adding water, will consist of PBS buffer with 2 % sucrose
Concentration:	Lot specific
Buffer:	Lyophilized from PBS with 2 % sucrose
Handling Advice:	Avoid repeat freeze-thaw cycles.
Storage:	4 °C, -20 °C
Storage Comment:	Long term: -20°C, the use of 50% glycerol is recommended if storing aliquots in -20°C for long term use (up to 1 year)  Short term (less than 1 week): 4°C. Avoid freeze-thaw cycles.



**Image 1.**