



[Go to Product page](#)

Datasheet for ABIN203338
anti-CHRN2 antibody (AA 155-204)

2 Images

Overview

Quantity:	100 µL
Target:	CHRN2
Binding Specificity:	AA 155-204
Reactivity:	Human, Chicken
Host:	Rabbit
Clonality:	Polyclonal
Conjugate:	This CHRN2 antibody is un-conjugated
Application:	Western Blotting (WB), Immunohistochemistry (IHC), Immunohistochemistry (Paraffin-embedded Sections) (IHC (p))

Product Details

Immunogen:	Synthetic peptide located between aa155-204 of human CHRN2 (P17787, NP_000739). Percent identity by BLAST analysis: Human, Chimpanzee, Gorilla, Galago, Zebra finch, Chicken (100%), Monkey, Marmoset, Mouse, Rat, Ferret, Elephant, Panda, Dog, Bovine, Bat, Pig, Opossum, Guinea pig, Trachemys (92%), Stickleback (85%), Platypus (84%). Type of Immunogen: Synthetic peptide
Isotype:	IgG
Specificity:	Human CHRN2
Predicted Reactivity:	Percent identity by BLAST analysis: Human (100%) Mouse, Dog, Bovine, Pig (92%).
Purification:	Protein A purified

Target Details

Target:	CHRNA2
Alternative Name:	CHRNA2 (CHRNA2 Products)
Background:	Name/Gene ID: CHRNA2 Subfamily: Nicotinic acetylcholine receptor Family: Ion Channel Synonyms: CHRNA2, AChR-beta1, Achr2, EFNL3, NACHR beta 2, NACHRB2
Gene ID:	1141
NCBI Accession:	NP_000739
UniProt:	P17787
Pathways:	Sensory Perception of Sound , Feeding Behaviour

Application Details

Application Notes:	Approved: IHC, IHC-P, WB (2.5 µg/mL)
Comment:	Target Species of Antibody: Human
Restrictions:	For Research Use only

Handling

Format:	Lyophilized
Reconstitution:	After adding water, will consist of PBS buffer with 2 % sucrose
Concentration:	Lot specific
Buffer:	Lyophilized from PBS with 2 % sucrose
Handling Advice:	Avoid repeat freeze-thaw cycles.
Storage:	4 °C, -20 °C
Storage Comment:	Long term: -20°C, the use of 50% glycerol is recommended if storing aliquots in -20°C for long term use (up to 1 year) Short term (less than 1 week): 4°C. Avoid freeze-thaw cycles.

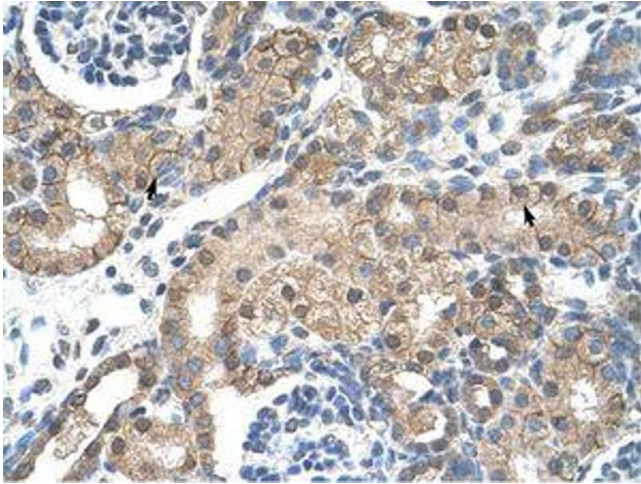


Image 1.

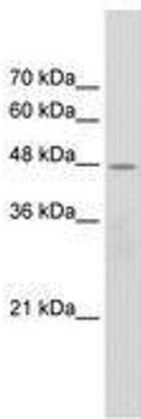


Image 2.