



[Go to Product page](#)

Datasheet for ABIN203344

anti-GTF2IRD1 antibody (AA 873-922)

2 Images

Overview

Quantity:	100 µL
Target:	GTF2IRD1
Binding Specificity:	AA 873-922
Reactivity:	Human, Mouse, Rat, Dog, Cow, Rabbit, Guinea Pig, Pig, Monkey, Bat
Host:	Rabbit
Clonality:	Polyclonal
Conjugate:	This GTF2IRD1 antibody is un-conjugated
Application:	Western Blotting (WB), Immunohistochemistry (IHC), Immunohistochemistry (Paraffin-embedded Sections) (IHC (p))

Product Details

Immunogen:	Synthetic peptide located between aa873-922 of human GTF2IRD1 (Q9UHL9, NP_057412). Percent identity by BLAST analysis: Human, Chimpanzee, Gorilla, Monkey, Galago, Mouse, Rat, Elephant, Panda, Dog, Bovine, Bat, Rabbit, Pig, Guinea pig, Platypus (100%), Turkey, Zebra finch, Chicken, Xenopus (92%). Type of Immunogen: Synthetic peptide
Isotype:	IgG
Specificity:	Human GTF2IRD1
Predicted Reactivity:	Percent identity by BLAST analysis: Human, Mouse, Rat, Dog, Bovine, Rabbit, Pig, Guinea pig (100%) Chicken (92%).

Product Details

Purification: Protein A purified

Target Details

Target: GTF2IRD1

Alternative Name: GTF3 / GTF2IRD1 ([GTF2IRD1 Products](#))

Background: Name/Gene ID: GTF2IRD1

Synonyms: GTF2IRD1, BEN, CREAM1, General transcription factor 3, GTF3, MUSTRD1, USE B1-binding protein, WBSCR12, RBAP2, WBS, HMusTRD1alpha1, WBSCR11

Gene ID: 9569

NCBI Accession: [NP_057412](#)

Application Details

Application Notes: Approved: IHC, IHC-P, WB (2.5 µg/mL)

Comment: Target Species of Antibody: Human

Restrictions: For Research Use only

Handling

Format: Lyophilized

Reconstitution: After adding water, will consist of PBS buffer with 2 % sucrose

Concentration: Lot specific

Buffer: Lyophilized from PBS with 2 % sucrose

Storage: 4 °C, -20 °C

Storage Comment: Long term: -20°C, the use of 50% glycerol is recommended if storing aliquots in -20°C for long term use (up to 1 year)

Short term (less than 1 week): 4°C. Avoid freeze-thaw cycles.

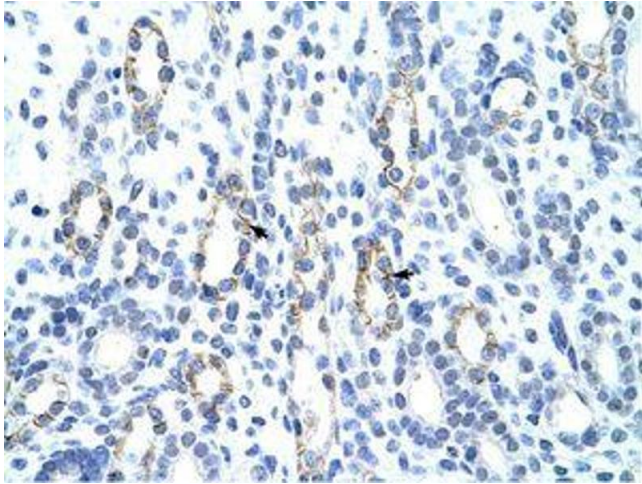


Image 1.

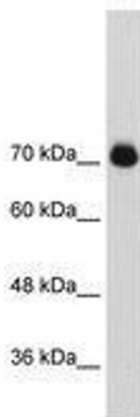


Image 2.