



[Go to Product page](#)

Datasheet for ABIN203350
anti-TM7 antibody (AA 20-69)

2 Images

Overview

| | |
|----------------------|--|
| Quantity: | 100 µL |
| Target: | TM7 |
| Binding Specificity: | AA 20-69 |
| Reactivity: | Human, Mouse, Rat, Chicken, Rabbit, Monkey, Zebrafish (Danio rerio), Bat, Dog, Guinea Pig, Xenopus laevis |
| Host: | Rabbit |
| Clonality: | Polyclonal |
| Conjugate: | This TM7 antibody is un-conjugated |
| Application: | Western Blotting (WB), Immunohistochemistry (IHC), Immunohistochemistry (Paraffin-embedded Sections) (IHC (p)) |

Product Details

| | |
|--------------|---|
| Immunogen: | Synthetic peptide located between aa20-69 of human TPM1 (P09493, NP_000357). Percent identity by BLAST analysis: Human, Chimpanzee, Gorilla, Orangutan, Gibbon, Monkey, Marmoset, Mouse, Rat, Elephant, Panda, Dog, Bat, Rabbit, Opossum, Guinea pig, Turkey, Zebra finch, Chicken, Xenopus, Catfish, Salmon, Stickleback, Zebrafish (100%), Galago, Sheep, Bovine, Horse, Pig, Platypus, Pufferfish (92%), Frog (85%). Type of Immunogen: Synthetic peptide |
| Isotype: | IgG |
| Specificity: | Human TPM1 / Tropomyosin |

Product Details

Predicted Reactivity: Percent identity by BLAST analysis: Human, Mouse, Rat, Dog, Rabbit, Guinea pig, Chicken, Xenopus, Zebrafish (100%) Sheep, Bovine, Pig (92%).

Purification: Protein A purified

Target Details

Target: TM7

Alternative Name: TPM1 / Tropomyosin ([TM7 Products](#))

Background: Name/Gene ID: TPM1

Synonyms: TPM1, Alpha-tropomyosin, C15orf13, Cardiomyopathy, hypertrophic 3, CMD1Y, CMH3, HTM-alpha, Sarcomeric tropomyosin kappa, TMSA, Tropomyosin, Tropomyosin 1 (alpha), Tropomyosin alpha-1 chain, Tropomyosin-1

Gene ID: 7168

NCBI Accession: [NP_000357](#)

UniProt: [P09493](#)

Application Details

Application Notes: Approved: IHC, IHC-P, WB (1.25 µg/mL)

Comment: Target Species of Antibody: Human

Restrictions: For Research Use only

Handling

Format: Lyophilized

Reconstitution: After adding water, will consist of PBS buffer with 2 % sucrose

Concentration: Lot specific

Buffer: Lyophilized from PBS with 2 % sucrose

Handling Advice: avoid freeze thaw cycles.

Storage: 4 °C,-20 °C

Storage Comment: Long term: -20°C, the use of 50% glycerol is recommended if storing aliquots in -20°C for long term use (up to 1 year)

Handling

Short term (less than 1 week): 4°C. Avoid freeze-thaw cycles.

Images

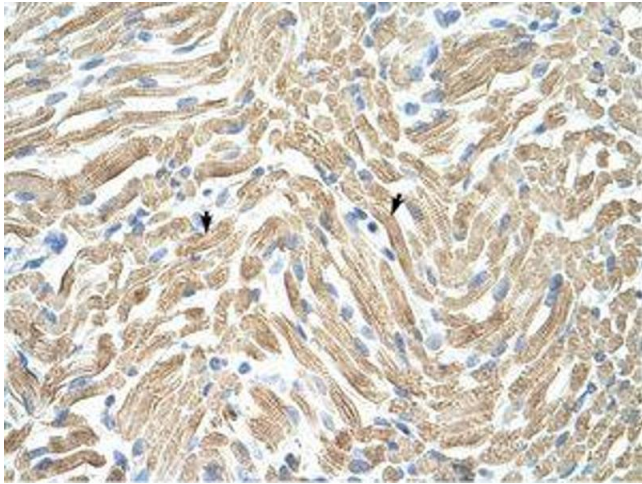


Image 1.

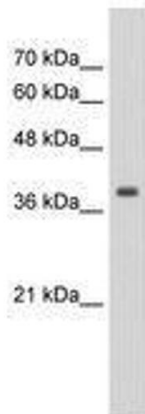


Image 2.