



Datasheet for ABIN203364
anti-PBX3 antibody (N-Term)



[Go to Product page](#)

2 Images

Overview

Quantity:	100 µL
Target:	PBX3
Binding Specificity:	N-Term
Reactivity:	Human, Mouse, Rat, Cow, Guinea Pig, Zebrafish (Danio rerio), Monkey
Host:	Rabbit
Clonality:	Polyclonal
Conjugate:	This PBX3 antibody is un-conjugated
Application:	Western Blotting (WB), Immunohistochemistry (IHC), Immunohistochemistry (Paraffin-embedded Sections) (IHC (p))

Product Details

Immunogen:	Synthetic peptide from N-Terminus of human PBX3 (P40426, NP_006186). Percent identity by BLAST analysis: Human, Chimpanzee, Gorilla, Monkey, Marmoset, Mouse, Rat, Elephant, Bovine, Guinea pig, Zebra finch (100%), Chicken (92%), Stickleback, Zebrafish (84%). Type of Immunogen: Synthetic peptide
Isotype:	IgG
Specificity:	Human Pbx3
Predicted Reactivity:	Percent identity by BLAST analysis: Human, Mouse, Rat, Bovine, Guinea pig (100%) Chicken (92%) Zebrafish (84%).
Purification:	Protein A purified

Target Details

Target:	PBX3
Alternative Name:	PBX3 (PBX3 Products)
Background:	Name/Gene ID: PBX3 Synonyms: PBX3, Pre-B-cell leukemia homeobox 3, Homeobox protein PBX3
Gene ID:	5090
NCBI Accession:	NP_006186
UniProt:	P40426

Application Details

Application Notes:	Approved: IHC, IHC-P, WB (2.5 µg/mL)
Comment:	Target Species of Antibody: Human
Restrictions:	For Research Use only

Handling

Format:	Lyophilized
Reconstitution:	After adding water, will consist of PBS buffer with 2 % sucrose
Concentration:	Lot specific
Buffer:	Lyophilized from PBS with 2 % sucrose
Handling Advice:	Avoid repeat freeze-thaw cycles.
Storage:	4 °C, -20 °C
Storage Comment:	Long term: -20°C, the use of 50% glycerol is recommended if storing aliquots in -20°C for long term use (up to 1 year) Short term (less than 1 week): 4°C. Avoid freeze-thaw cycles.

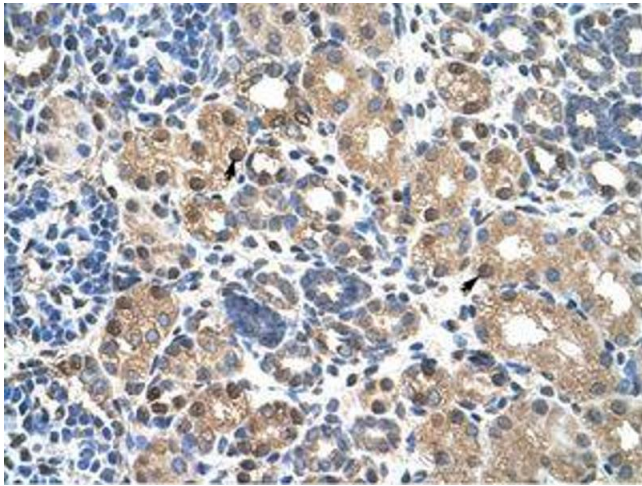


Image 1.

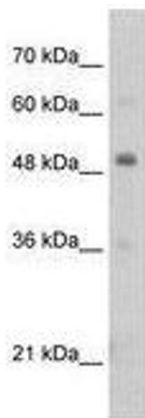


Image 2.