

Datasheet for ABIN203367
anti-RIPK3 antibody (AA 168-217)

3 Images

[Go to Product page](#)

Overview

Quantity:	100 µL
Target:	RIPK3
Binding Specificity:	AA 168-217
Reactivity:	Human, Monkey
Host:	Rabbit
Clonality:	Polyclonal
Conjugate:	This RIPK3 antibody is un-conjugated
Application:	Western Blotting (WB), Immunohistochemistry (IHC), Immunohistochemistry (Paraffin-embedded Sections) (IHC (p))

Product Details

Immunogen:	Synthetic peptide located between aa168-217 of human RIPK3 (Q9Y572, NP_006862). Percent identity by BLAST analysis: Human, Chimpanzee, Gorilla, Monkey, Rice (100%), Gibbon, Panda, Dog (92%), Galago, Marmoset, Mouse, Horse, Pig (85%). Type of Immunogen: Synthetic peptide
Isotype:	IgG
Specificity:	Human RIPK3 / RIP3
Predicted Reactivity:	Percent identity by BLAST analysis: Human (100%) Dog (92%) Mouse, Horse, Pig (85%).
Purification:	Protein A purified

Target Details

Target:	RIPK3
Alternative Name:	RIPK3 / RIP3 (RIPK3 Products)
Background:	Name/Gene ID: RIPK3 Subfamily: RIP Family: Protein Kinase Synonyms: RIPK3, Receptor interacting protein 3, RIP-like protein kinase 3, RIP3, RIP-3, Receptor-interacting protein 3
Gene ID:	11035
NCBI Accession:	NP_006862
UniProt:	Q9Y572
Pathways:	Activation of Innate immune Response , Toll-Like Receptors Cascades

Application Details

Application Notes:	Approved: IHC, IHC-P, WB (1.25 µg/mL)
Comment:	Target Species of Antibody: Human
Restrictions:	For Research Use only

Handling

Format:	Lyophilized
Reconstitution:	After adding water, will consist of PBS buffer with 2 % sucrose
Concentration:	Lot specific
Buffer:	Lyophilized from PBS with 2 % sucrose
Handling Advice:	Avoid repeat freeze-thaw cycles.
Storage:	4 °C, -20 °C
Storage Comment:	Long term: -20°C, the use of 50% glycerol is recommended if storing aliquots in -20°C for long term use (up to 1 year) Short term (less than 1 week): 4°C. Avoid freeze-thaw cycles.



Image 1.

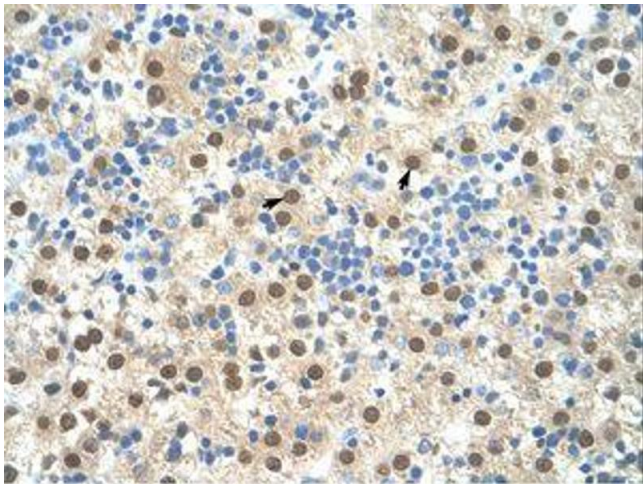


Image 2.

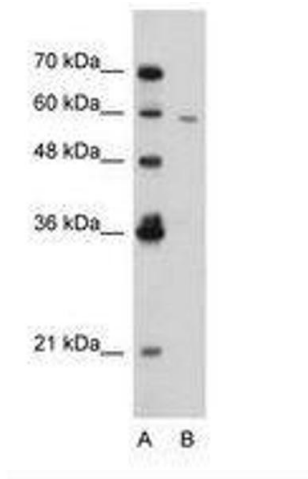


Image 3.