



[Go to Product page](#)

Datasheet for ABIN203372
anti-DLX2 antibody (AA 238-287)

3 Images

Overview

Quantity:	100 µL
Target:	DLX2
Binding Specificity:	AA 238-287
Reactivity:	Human, Mouse, Rat, Cow, Dog, Guinea Pig, Pig, Monkey
Host:	Rabbit
Clonality:	Polyclonal
Conjugate:	This DLX2 antibody is un-conjugated
Application:	Western Blotting (WB), Immunohistochemistry (IHC), Immunohistochemistry (Paraffin-embedded Sections) (IHC (p))

Product Details

Immunogen:	Synthetic peptide located between aa238-287 of human DLX2 (Q07687). Percent identity by BLAST analysis: Human, Gorilla, Gibbon, Monkey, Galago, Marmoset, Mouse, Rat, Dog, Bovine, Pig, Guinea pig (100%), Elephant (92%), Opossum (85%). Type of Immunogen: Synthetic peptide
Isotype:	IgG
Specificity:	Human Dlx2
Predicted Reactivity:	Percent identity by BLAST analysis: Human, Mouse, Rat, Bovine, Pig (100%).
Purification:	Protein A purified

Target Details

Target:	DLX2
Alternative Name:	DLX2 (DLX2 Products)
Background:	Name/Gene ID: DLX2 Synonyms: DLX2, Distal-less homeo box 2, Distal-less homeobox 2, TES1, Homeobox protein DLX-2, TES-1
Gene ID:	1746
UniProt:	Q07687

Application Details

Application Notes:	Approved: IHC, IHC-P, WB (2.5 µg/mL)
Comment:	Target Species of Antibody: Human
Restrictions:	For Research Use only

Handling

Format:	Lyophilized
Reconstitution:	After adding water, will consist of PBS buffer with 2 % sucrose
Concentration:	Lot specific
Buffer:	Lyophilized from PBS with 2 % sucrose
Handling Advice:	Avoid repeat freeze-thaw cycles.
Storage:	4 °C, -20 °C
Storage Comment:	Long term: -20°C, the use of 50% glycerol is recommended if storing aliquots in -20°C for long term use (up to 1 year) Short term (less than 1 week): 4°C. Avoid freeze-thaw cycles.

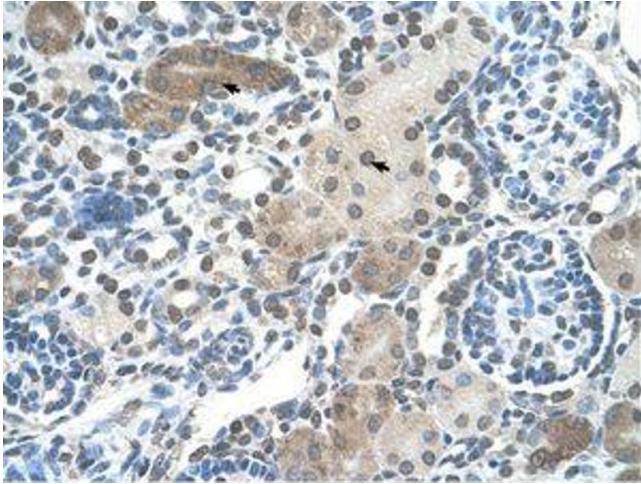


Image 1.

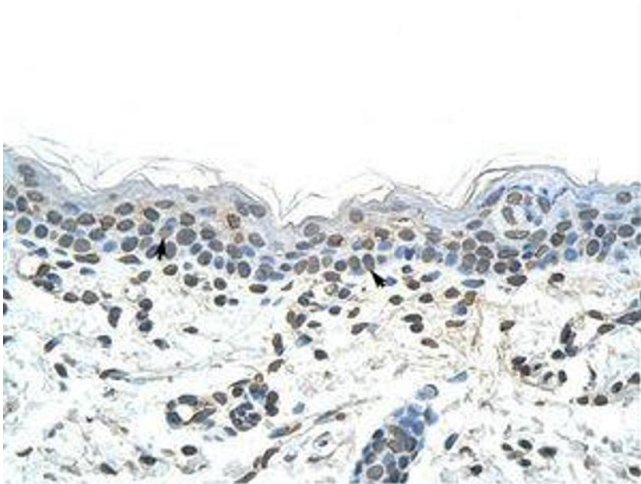


Image 2.

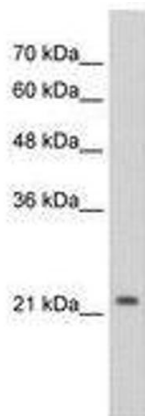


Image 3.