

Datasheet for ABIN203382
anti-Desmin antibody (AA 29-78)



[Go to Product page](#)

1 Image

Overview

Quantity:	100 µL
Target:	Desmin (DES)
Binding Specificity:	AA 29-78
Reactivity:	Human, Mouse, Rat, Hamster, Pig, Dog, Rabbit, Cow, Horse, Guinea Pig, Monkey
Host:	Rabbit
Clonality:	Polyclonal
Conjugate:	This Desmin antibody is un-conjugated
Application:	Western Blotting (WB)

Product Details

Immunogen:	Synthetic peptide located between aa29-78 of human DES (P17661, NP_001918). Percent identity by BLAST analysis: Human, Chimpanzee, Gorilla, Gibbon, Baboon, Monkey, Galago, Marmoset, Mouse, Rat, Hamster, Elephant, Dog, Bovine, Rabbit, Horse, Pig, Opossum, Guinea pig, Armadillo (100%), Shrew (93%), Bat (92%). Type of Immunogen: Synthetic peptide
Isotype:	IgG
Specificity:	Human DES / Desmin
Predicted Reactivity:	Percent identity by BLAST analysis: Human, Mouse, Rat, Dog, Bovine, Rabbit, Pig, Guinea pig (100%).
Purification:	Protein A purified

Target Details

Target:	Desmin (DES)
Alternative Name:	DES / Desmin (DES Products)
Background:	Name/Gene ID: DES Synonyms: DES, ARVC7, ARVD7, CMD1I, CSM1, CSM2, MFM1, SCPNK, Desmin, Intermediate filament protein
Gene ID:	1674
NCBI Accession:	NP_001918
UniProt:	P17661

Application Details

Application Notes:	Approved: WB (5 µg/mL)
Comment:	Target Species of Antibody: Human
Restrictions:	For Research Use only

Handling

Format:	Lyophilized
Reconstitution:	After adding water, will consist of PBS buffer with 2 % sucrose
Concentration:	Lot specific
Buffer:	Lyophilized from PBS with 2 % sucrose
Handling Advice:	Avoid repeat freeze-thaw cycles.
Storage:	4 °C, -20 °C
Storage Comment:	Long term: -20°C, the use of 50% glycerol is recommended if storing aliquots in -20°C for long term use (up to 1 year) Short term (less than 1 week): 4°C. Avoid freeze-thaw cycles.

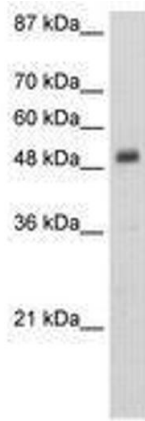


Image 1.