



[Go to Product page](#)

Datasheet for ABIN203387  
**anti-FOXR2 antibody (AA 82-131)**

2 Images

Overview

Quantity:	100 µL
Target:	FOXR2
Binding Specificity:	AA 82-131
Reactivity:	Human
Host:	Rabbit
Clonality:	Polyclonal
Conjugate:	This FOXR2 antibody is un-conjugated
Application:	Western Blotting (WB), Immunohistochemistry (IHC), Immunohistochemistry (Paraffin-embedded Sections) (IHC (p))

Product Details

Immunogen:	Synthetic peptide located between aa82-131 of human FOXR2 (Q6PJQ5, NP_940853). Percent identity by BLAST analysis: Human, Gorilla (100%), Gibbon, Monkey (85%).  Type of Immunogen: Synthetic peptide
Isotype:	IgG
Specificity:	Human FOXR2
Predicted Reactivity:	Percent identity by BLAST analysis: Human (100%).
Purification:	Protein A purified

## Target Details

---

Target:	FOXR2
Alternative Name:	FOXR2 ( <a href="#">FOXR2 Products</a> )
Background:	Name/Gene ID: FOXR2  Synonyms: FOXR2, Forkhead box protein R2, FOXN6, Forkhead box protein N6, Forkhead box R2
Gene ID:	139628
NCBI Accession:	<a href="#">NP_940853</a>
UniProt:	<a href="#">Q6PJJ5</a>

## Application Details

---

Application Notes:	Approved: IHC, IHC-P, WB (1.25 µg/mL)
Comment:	Target Species of Antibody: Human
Restrictions:	For Research Use only

## Handling

---

Format:	Lyophilized
Reconstitution:	After adding water, will consist of PBS buffer with 2 % sucrose
Concentration:	Lot specific
Buffer:	Lyophilized from PBS with 2 % sucrose
Handling Advice:	Avoid repeat freeze-thaw cycles.
Storage:	4 °C, -20 °C
Storage Comment:	Long term: -20°C, the use of 50% glycerol is recommended if storing aliquots in -20°C for long term use (up to 1 year)  Short term (less than 1 week): 4°C. Avoid freeze-thaw cycles.

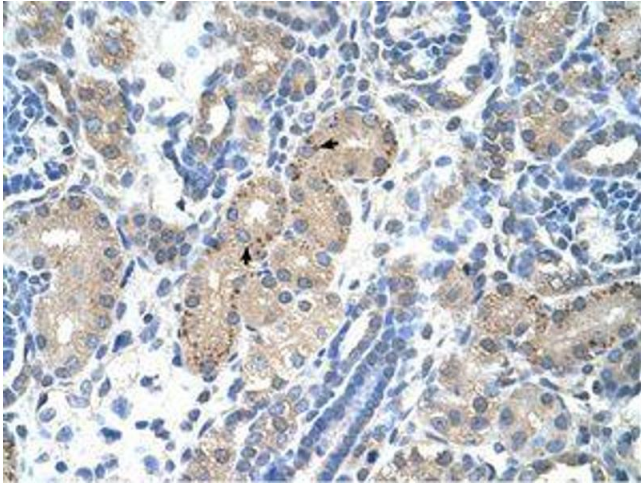


Image 1.

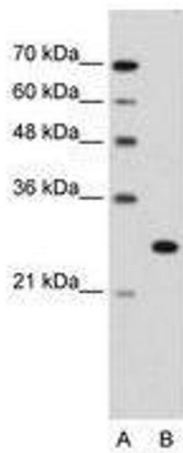


Image 2.