

Datasheet for ABIN203388
anti-LOR antibody (AA 58-107)



[Go to Product page](#)

2 Images

Overview

Quantity:	100 µL
Target:	LOR
Binding Specificity:	AA 58-107
Reactivity:	Please inquire
Host:	Rabbit
Clonality:	Polyclonal
Conjugate:	This LOR antibody is un-conjugated
Application:	Western Blotting (WB), Immunohistochemistry (IHC), Immunohistochemistry (Paraffin-embedded Sections) (IHC (p))

Product Details

Immunogen:	Synthetic peptide located between aa58-107 of human LOR (P23490, NP_000418). Percent identity by BLAST analysis: Human, Gorilla (100%), Bovine (92%), Mouse (85%), Rat (81%). Type of Immunogen: Synthetic peptide
Isotype:	IgG
Specificity:	Human LOR / Loricrin
Predicted Reactivity:	Percent identity by BLAST analysis: Human (100%) Bovine (92%) Mouse (85%) Rat (81%).
Purification:	Protein A purified

Target Details

Target:	LOR
Alternative Name:	Loricrin (LOR Products)
Target Type:	Chemical
Background:	Name/Gene ID: LOR Synonyms: LOR, Loricrin, LRN
Gene ID:	4014
NCBI Accession:	NP_000418

Application Details

Application Notes:	Approved: IHC, IHC-P, WB (5 µg/mL)
Comment:	Target Species of Antibody: Human
Restrictions:	For Research Use only

Handling

Format:	Lyophilized
Reconstitution:	After adding water, will consist of PBS buffer with 2 % sucrose
Concentration:	Lot specific
Buffer:	Lyophilized from PBS with 2 % sucrose
Handling Advice:	Avoid repeat freeze-thaw cycles.
Storage:	4 °C, -20 °C
Storage Comment:	Long term: -20°C, the use of 50% glycerol is recommended if storing aliquots in -20°C for long term use (up to 1 year) Short term (less than 1 week): 4°C. Avoid freeze-thaw cycles.

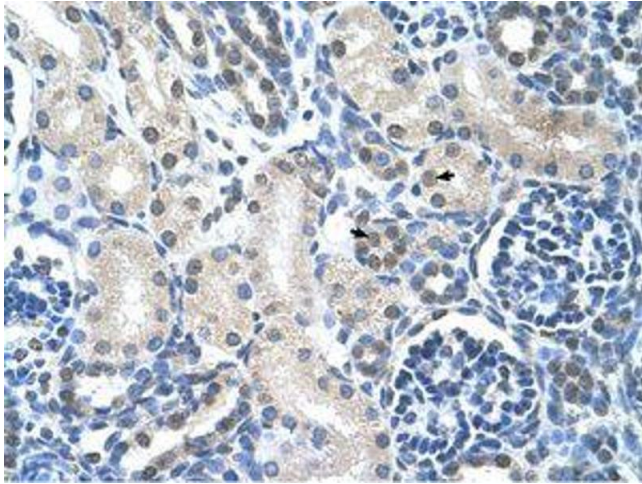


Image 1.



Image 2.