

Datasheet for ABIN203394  
**anti-RPS29 antibody (C-Term)**



[Go to Product page](#)

1 Image

## Overview

Quantity:	100 µL
Target:	RPS29
Binding Specificity:	C-Term
Reactivity:	Human, Mouse, Rat, Dog, Cow, Guinea Pig, Rabbit, Bat, Chicken, Hamster, Monkey, Pig, Xenopus laevis
Host:	Rabbit
Clonality:	Polyclonal
Conjugate:	This RPS29 antibody is un-conjugated
Application:	Western Blotting (WB)

## Product Details

Immunogen:	Synthetic peptide from C-Terminus of human RPS29 (P62273, NP_001023). Percent identity by BLAST analysis: Human, Chimpanzee, Gorilla, Orangutan, Gibbon, Monkey, Galago, Marmoset, Mouse, Rat, Hamster, Elephant, Panda, Dog, Bovine, Bat, Rabbit, Pig, Opossum, Guinea pig, Turkey, Zebra finch, Chicken, Xenopus (100%), Horse, Armadillo, Catfish, Smelt, Stickleback, Pufferfish, Zebrafish (92%), Salmon, Pike, Mosquito, Tick (85%), Rice (84%).  Type of Immunogen: Synthetic peptide
Isotype:	IgG
Specificity:	Human RPS29
Predicted Reactivity:	Percent identity by BLAST analysis: Human, Dog, Guinea pig, Chicken (100%) Xenopus,

## Product Details

---

Zebrafish (92%).

Purification: Protein A purified

## Target Details

---

Target: RPS29

Alternative Name: RPS29 ([RPS29 Products](#))

Background: Name/Gene ID: RPS29

Synonyms: RPS29, 40S ribosomal protein S29, S29, Ribosomal protein S29

Gene ID: 6235

NCBI Accession: [NP\\_001023](#)

UniProt: [P62273](#)

## Application Details

---

Application Notes: Approved: WB (1.25 µg/mL)

Comment: Target Species of Antibody: Human

Restrictions: For Research Use only

## Handling

---

Format: Lyophilized

Reconstitution: After adding water, will consist of PBS buffer with 2 % sucrose

Concentration: Lot specific

Buffer: Lyophilized from PBS with 2 % sucrose

Handling Advice: Avoid repeat freeze-thaw cycles.

Storage: 4 °C, -20 °C

Storage Comment: Long term: -20°C, the use of 50% glycerol is recommended if storing aliquots in -20°C for long term use (up to 1 year)

Short term (less than 1 week): 4°C. Avoid freeze-thaw cycles.

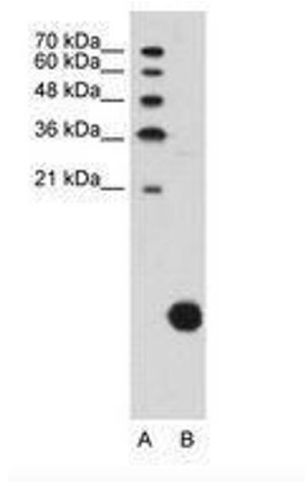


Image 1.