



Datasheet for ABIN203401
anti-PTGS1 antibody (AA 51-100)



[Go to Product page](#)

2 Images

Overview

Quantity:	100 µL
Target:	PTGS1
Binding Specificity:	AA 51-100
Reactivity:	Human, Mouse, Monkey, Pig, Bat
Host:	Rabbit
Clonality:	Polyclonal
Conjugate:	This PTGS1 antibody is un-conjugated
Application:	Western Blotting (WB), Immunohistochemistry (IHC), Immunohistochemistry (Paraffin-embedded Sections) (IHC (p))

Product Details

Immunogen:	Synthetic peptide located between aa51-100 of human PTGS1 (P23219, NP_000953). Percent identity by BLAST analysis: Human, Chimpanzee, Gibbon, Monkey, Marmoset, Mouse, Bat (100%), Gorilla, Rat, Dog, Bovine, Horse (92%), Elephant, Pig (85%). Type of Immunogen: Synthetic peptide
Isotype:	IgG
Specificity:	Human PTGS1 / COX-1
Predicted Reactivity:	Percent identity by BLAST analysis: Human, Mouse (100%) Rat, Dog, Horse (92%) Pig (85%).
Purification:	Protein A purified

Target Details

Target:	PTGS1
Alternative Name:	PTGS1 / COX1 / COX-1 (PTGS1 Products)
Background:	Name/Gene ID: PTGS1 Synonyms: PTGS1, COX1, Cyclooxygenase-1, COX-1, PES-1, PGH synthase 1, Prostaglandin G/H synthase 1, PTGHS, COX3, PCOX1, PGG/HS, PGHS-1, PGHS1, PHS 1, PHS1, Prostaglandin H2 synthase 1
Gene ID:	5742
NCBI Accession:	NP_000953
UniProt:	P23219

Application Details

Application Notes:	Approved: IHC, IHC-P, WB (5 µg/mL)
Comment:	Target Species of Antibody: Human
Restrictions:	For Research Use only

Handling

Format:	Lyophilized
Reconstitution:	After adding water, will consist of PBS buffer with 2 % sucrose
Concentration:	Lot specific
Buffer:	Lyophilized from PBS with 2 % sucrose
Handling Advice:	Avoid repeat freeze-thaw cycles.
Storage:	4 °C,-20 °C
Storage Comment:	Long term: -20°C, the use of 50% glycerol is recommended if storing aliquots in -20°C for long term use (up to 1 year) Short term (less than 1 week): 4°C. Avoid freeze-thaw cycles.

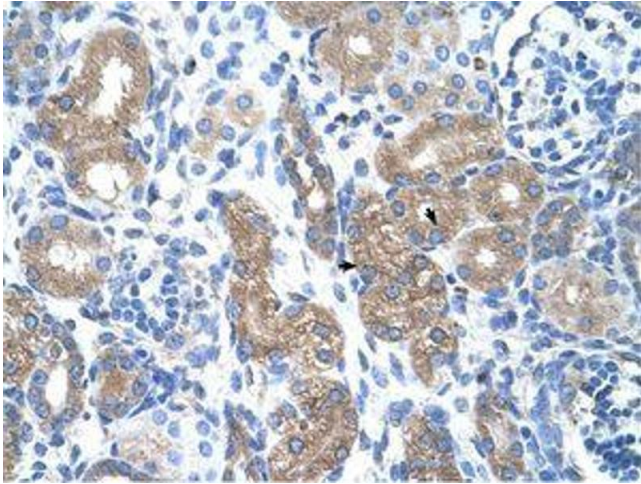


Image 1.

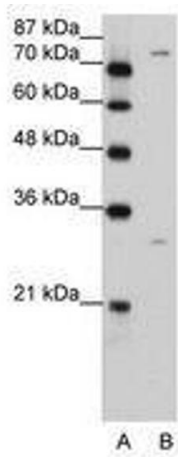


Image 2.