



Datasheet for ABIN203403
anti-Raly antibody (C-Term)



[Go to Product page](#)

2 Images

Overview

Quantity:	100 µL
Target:	Raly (RALY)
Binding Specificity:	C-Term
Reactivity:	Human, Mouse, Rat, Dog, Cow, Guinea Pig, Rabbit, Horse, Monkey, Pig, Hamster
Host:	Rabbit
Clonality:	Polyclonal
Conjugate:	This Raly antibody is un-conjugated
Application:	Western Blotting (WB), Immunohistochemistry (IHC), Immunohistochemistry (Paraffin-embedded Sections) (IHC (p))

Product Details

Immunogen:	Synthetic peptide from C-Terminus of human RALY (Q9UKM9, NP_057951). Percent identity by BLAST analysis: Human, Chimpanzee, Gorilla, Gibbon, Monkey, Marmoset, Mouse, Rat, Hamster, Elephant, Dog, Bovine, Rabbit, Horse, Pig, Guinea pig (100%). Type of Immunogen: Synthetic peptide
Isotype:	IgG
Specificity:	Human RALY
Predicted Reactivity:	Percent identity by BLAST analysis: Human, Mouse, Rat, Dog, Bovine, Rabbit, Horse, Pig, Guinea pig (100%).
Purification:	Protein A purified

Target Details

Target:	Raly (RALY)
Alternative Name:	RALY (RALY Products)
Background:	Name/Gene ID: RALY Synonyms: RALY, Autoantigen p542, HNRPCL2, HnRNP core protein C-like 2, RNA-binding protein Raly, p542
Gene ID:	22913
NCBI Accession:	NP_057951
UniProt:	Q9UKM9

Application Details

Application Notes:	Approved: IHC, IHC-P, WB (1.25 µg/mL)
Comment:	Target Species of Antibody: Human
Restrictions:	For Research Use only

Handling

Format:	Lyophilized
Reconstitution:	After adding water, will consist of PBS buffer with 2 % sucrose
Concentration:	Lot specific
Buffer:	Lyophilized from PBS with 2 % sucrose
Handling Advice:	Avoid repeat freeze-thaw cycles.
Storage:	4 °C, -20 °C
Storage Comment:	Long term: -20°C, the use of 50% glycerol is recommended if storing aliquots in -20°C for long term use (up to 1 year) Short term (less than 1 week): 4°C. Avoid freeze-thaw cycles.

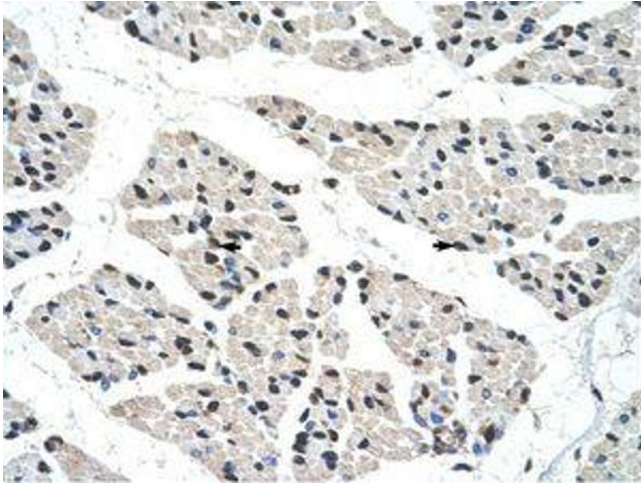


Image 1.

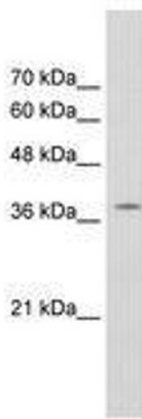


Image 2.