



[Go to Product page](#)

Datasheet for ABIN203405

## anti-HOXB1 antibody (AA 63-112)

### 1 Image

#### Overview

Quantity:	100 µL
Target:	HOXB1
Binding Specificity:	AA 63-112
Reactivity:	Human, Mouse, Dog
Host:	Rabbit
Clonality:	Polyclonal
Conjugate:	This HOXB1 antibody is un-conjugated
Application:	Western Blotting (WB)

#### Product Details

Immunogen:	Synthetic peptide located between aa63-112 of mouse Hoxb1 (P17919, NP_032292). Percent identity by BLAST analysis: Mouse (100%), Rat, Hamster (92%), Opossum (91%), Human, Chimpanzee, Gorilla, Orangutan, Gibbon, Monkey, Galago, Marmoset (85%).  Type of Immunogen: Synthetic peptide
Isotype:	IgG
Specificity:	Mouse HOXB1
Predicted Reactivity:	Percent identity by BLAST analysis: Mouse (100%) Rat (92%) Human (85%).
Purification:	Protein A purified

## Target Details

---

Target:	HOXB1
Alternative Name:	HOXB1 ( <a href="#">HOXB1 Products</a> )
Background:	Name/Gene ID: HOXB1  Synonyms: HOXB1, Homeo box B1, Homeobox protein Hox-2l, Hox-2.9, HCFP3, Homeobox protein Hox-B1, HOX2l, Homeobox B1, HOX2
Gene ID:	3211
NCBI Accession:	<a href="#">NP_032292</a>
UniProt:	<a href="#">P14653</a>

## Application Details

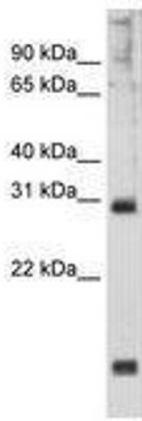
---

Application Notes:	Optimal working dilution should be determined by the investigator.
Comment:	Target Species of Antibody: Mouse
Restrictions:	For Research Use only

## Handling

---

Format:	Lyophilized
Reconstitution:	After adding water, will consist of PBS buffer with 2 % sucrose
Concentration:	Lot specific
Buffer:	Lyophilized from PBS with 2 % sucrose
Handling Advice:	Avoid repeat freeze-thaw cycles.
Storage:	4 °C,-20 °C
Storage Comment:	Long term: -20°C, the use of 50% glycerol is recommended if storing aliquots in -20°C for long term use (up to 1 year)  Short term (less than 1 week): 4°C. Avoid freeze-thaw cycles.



**Image 1.**