

## Datasheet for ABIN203416 **anti-NAMPT antibody (C-Term)**

### 2 Images



[Go to Product page](#)

### Overview

|                      |  |
|----------------------|--|
| Quantity:            | 100 µL   |
| Target:              | NAMPT  |
| Binding Specificity: | C-Term   |
| Reactivity:          | Human, Chicken, Xenopus laevis, Guinea Pig   |
| Host:                | Rabbit   |
| Clonality:           | Polyclonal   |
| Conjugate:           | This NAMPT antibody is un-conjugated   |
| Application:         | Western Blotting (WB), Immunohistochemistry (IHC), Immunohistochemistry (Paraffin-embedded Sections) (IHC (p)) |

### Product Details

|                       |  |
|-----------------------|--|
| Immunogen:            | Synthetic peptide from C-Terminus of human NAMPT (P43490, NP_005737). Percent identity by BLAST analysis: Human, Chimpanzee, Gorilla, Guinea pig, Zebra finch, Chicken, Xenopus, Salmon (100%), Gibbon, Marmoset, Mouse, Rat, Dog, Bovine, Rabbit, Horse, Pig, Zebrafish (92%), Opossum, Platypus (85%).<br><br>Type of Immunogen: Synthetic peptide |
| Isotype:              | IgG  |
| Specificity:          | Human NAMPT  |
| Predicted Reactivity: | Percent identity by BLAST analysis: Human, Chicken, Xenopus, Salmon, Pufferfish (100%)<br>Mouse, Rat, Pig (92%).   |

## Product Details

---

Purification: Protein A purified

## Target Details

---

Target: NAMPT

Alternative Name: NAMPT / Visfatin ([NAMPT Products](#))

Background: Name/Gene ID: NAMPT

Synonyms: NAMPT, PBEF, Pre-B cell-enhancing factor, VISFATIN, VF, NAMPRase, PBEF1

Gene ID: 10135

NCBI Accession: [NP\\_005737](#)

UniProt: [P43490](#)

## Application Details

---

Application Notes: Approved: IHC, IHC-P, WB (1.25 µg/mL)

Comment: Target Species of Antibody: Human

Restrictions: For Research Use only

## Handling

---

Format: Lyophilized

Reconstitution: ddH2O

Concentration: Lot specific

Buffer: Lyophilized from PBS with 2 % sucrose

Handling Advice: Avoid repeat freeze-thaw cycles.

Storage: 4 °C, -20 °C

Storage Comment: Long term: -20°C, the use of 50% glycerol is recommended if storing aliquots in -20°C for long term use (up to 1 year)

Short term (less than 1 week): 4°C. Avoid freeze-thaw cycles.

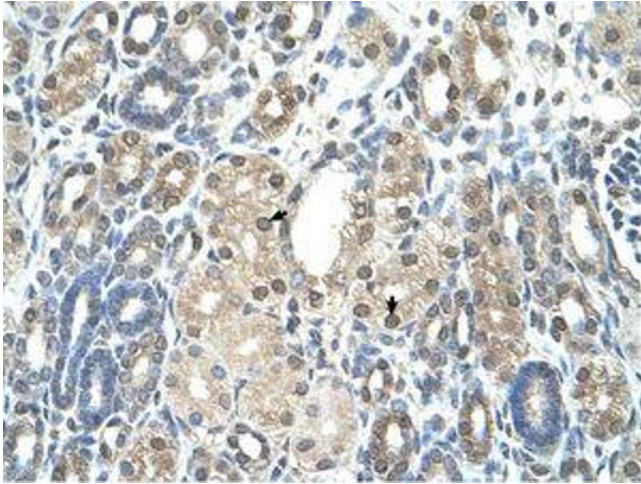


Image 1.

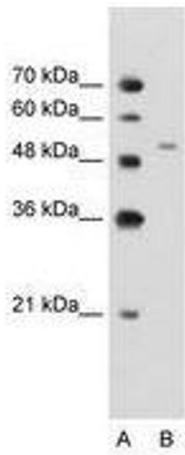


Image 2.