

Datasheet for ABIN203425  
**anti-Follistatin antibody (C-Term)**



[Go to Product page](#)

1 Image

## Overview

Quantity:	100 µL
Target:	Follistatin (FST)
Binding Specificity:	C-Term
Reactivity:	Human, Mouse, Rat, Dog, Goat, Guinea Pig, Horse, Rabbit, Sheep, Cow, Monkey, Pig
Host:	Rabbit
Clonality:	Polyclonal
Conjugate:	This Follistatin antibody is un-conjugated
Application:	Western Blotting (WB)

## Product Details

Immunogen:	Synthetic peptide from C-Terminus of human FST (Q6FHE1, NP_006341). Percent identity by BLAST analysis: Human, Chimpanzee, Gorilla, Gibbon, Monkey, Marmoset, Mouse, Rat, Sheep, Goat, Elephant, Panda, Dog, Bovine, Rabbit, Horse, Pig, Guinea pig, Platypus (100%), Galago, Bat, Zebra finch, Chicken, Xenopus, Zebrafish (92%), Opossum, Lizard, Trout (85%).  Type of Immunogen: Synthetic peptide
Isotype:	IgG
Specificity:	Human FST / Follistatin
Predicted Reactivity:	Percent identity by BLAST analysis: Human, Mouse, Rat, Sheep, Dog, Bovine, Goat, Rabbit, Horse, Pig, Guinea pig (100%) Chicken, Zebrafish (92%) Xenopus (85%).
Purification:	Protein A purified

## Target Details

---

Target:	Follistatin (FST)
Alternative Name:	FST / Follistatin ( <a href="#">FST Products</a> )
Background:	Name/Gene ID: FST  Synonyms: FST, Activin-binding protein, Follistatin isoform FST317, Follistatin, Fs
Gene ID:	10468
NCBI Accession:	<a href="#">NP_006341</a>
UniProt:	<a href="#">P19883</a>
Pathways:	<a href="#">Negative Regulation of Hormone Secretion</a>

## Application Details

---

Application Notes:	Approved: WB (2.5 µg/mL)
Comment:	Target Species of Antibody: Human
Restrictions:	For Research Use only

## Handling

---

Format:	Lyophilized
Reconstitution:	Distilled water
Concentration:	Lot specific
Buffer:	Lyophilized from PBS with 2 % sucrose
Handling Advice:	Avoid repeat freeze-thaw cycles.
Storage:	4 °C,-20 °C
Storage Comment:	Long term: -20°C, the use of 50% glycerol is recommended if storing aliquots in -20°C for long term use (up to 1 year) Short term (less than 1 week): 4°C. Avoid freeze-thaw cycles.

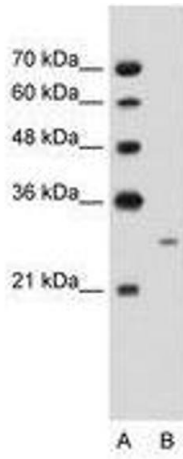


Image 1.