

Datasheet for ABIN203426

anti-METTL13 antibody (C-Term)[Go to Product page](#)**1** Image

Overview

Quantity:	100 µL
Target:	METTL13
Binding Specificity:	C-Term
Reactivity:	Human, Mouse, Rat, Monkey
Host:	Rabbit
Clonality:	Polyclonal
Conjugate:	This METTL13 antibody is un-conjugated
Application:	Western Blotting (WB)

Product Details

Immunogen:	Synthetic peptide from C-Terminus of human METTL13 (Q8N6R0-1, NP_001007240). Percent identity by BLAST analysis: Human, Chimpanzee, Gorilla, Gibbon, Monkey, Marmoset, Mouse, Rat (100%), Galago, Hamster, Rabbit, Horse, Guinea pig (92%), Elephant (85%), Bat, Pig, Opossum (84%). Type of Immunogen: Synthetic peptide
Isotype:	IgG
Specificity:	Human METTL13 / KIAA0859
Predicted Reactivity:	Percent identity by BLAST analysis: Human, Mouse, Rat (100%).
Purification:	Protein A purified

Target Details

Target:	METTL13
Alternative Name:	METTL13 / KIAA0859 (METTL13 Products)
Background:	Name/Gene ID: METTL13 Synonyms: METTL13, Antiapoptotic protein FEAT, CGI-01, Feat, Methyltransferase like 13, KIAA0859
Gene ID:	51603
NCBI Accession:	NP_001007240
UniProt:	Q8N6R0

Application Details

Application Notes:	Approved: WB (2.5 µg/mL)
Comment:	Target Species of Antibody: Human
Restrictions:	For Research Use only

Handling

Format:	Lyophilized
Reconstitution:	After adding water, will consist of PBS buffer with 2 % sucrose
Concentration:	Lot specific
Buffer:	Lyophilized from PBS with 2 % sucrose
Handling Advice:	Avoid repeat freeze-thaw cycles.
Storage:	4 °C, -20 °C
Storage Comment:	Long term: -20°C, the use of 50% glycerol is recommended if storing aliquots in -20°C for long term use (up to 1 year) Short term (less than 1 week): 4°C. Avoid freeze-thaw cycles.

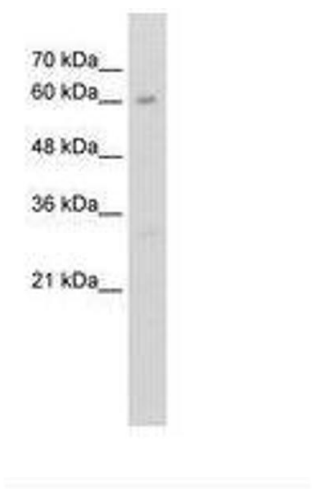


Image 1.