



[Go to Product page](#)

Datasheet for ABIN203427

## anti-MAP3K7CL antibody (AA 151-200)

### 2 Images

#### Overview

Quantity:	100 µL
Target:	MAP3K7CL
Binding Specificity:	AA 151-200
Reactivity:	Human, Rat, Mouse, Cow, Guinea Pig, Rabbit, Hamster, Monkey
Host:	Rabbit
Clonality:	Polyclonal
Conjugate:	This MAP3K7CL antibody is un-conjugated
Application:	Western Blotting (WB), Immunohistochemistry (IHC), Immunohistochemistry (Paraffin-embedded Sections) (IHC (p))

#### Product Details

Immunogen:	Synthetic peptide located between aa151-200 of human MAP3K7CL (P57077, NP_064537). Percent identity by BLAST analysis: Human, Gorilla, Gibbon, Monkey, Galago, Marmoset, Mouse, Rat, Hamster, Elephant, Bovine, Rabbit, Guinea pig (100%), Dog, Horse (92%), Lizard, Xenopus (83%).  Type of Immunogen: Synthetic peptide
Isotype:	IgG
Specificity:	Human C21orf7
Predicted Reactivity:	Percent identity by BLAST analysis: Human, Guinea pig (100%) Horse (92%).
Purification:	Protein A purified

## Target Details

---

Target:	MAP3K7CL
Alternative Name:	MAP3K7CL / TAK1L ( <a href="#">MAP3K7CL Products</a> )
Background:	Name/Gene ID: MAP3K7CL  Synonyms: MAP3K7CL, HC210RF7, MAP3K7 c-terminal like, TAK1-like protein, TAK1-like protein 2, TAKL, TAKL-2, TGF-beta activated kinase, TAKL-4, TAK1L, C21orf7, TAK1-like protein 1, TAK1-like protein 4, TAKL-1
Gene ID:	56911
NCBI Accession:	<a href="#">NP_064537</a>
UniProt:	<a href="#">P57077</a>

## Application Details

---

Application Notes:	Approved: IHC, IHC-P, WB (1.25 µg/mL)
Comment:	Target Species of Antibody: Human
Restrictions:	For Research Use only

## Handling

---

Format:	Lyophilized
Reconstitution:	After adding water, will consist of PBS buffer with 2 % sucrose
Concentration:	Lot specific
Buffer:	Lyophilized from PBS with 2 % sucrose
Handling Advice:	Avoid repeat freeze-thaw cycles.
Storage:	4 °C,-20 °C
Storage Comment:	Long term: -20°C, the use of 50% glycerol is recommended if storing aliquots in -20°C for long term use (up to 1 year) Short term (less than 1 week): 4°C. Avoid freeze-thaw cycles.

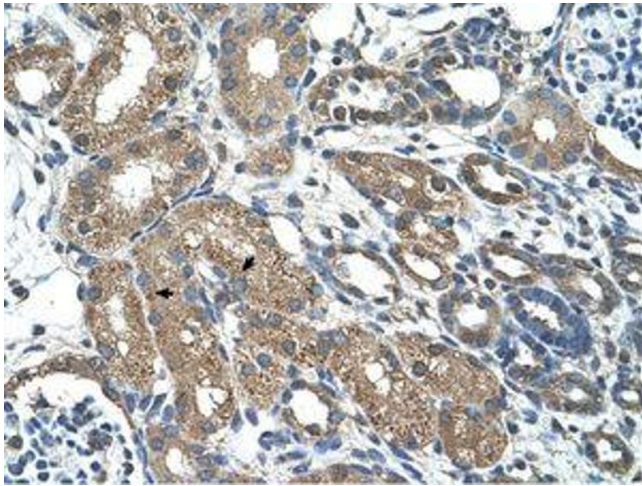


Image 1.

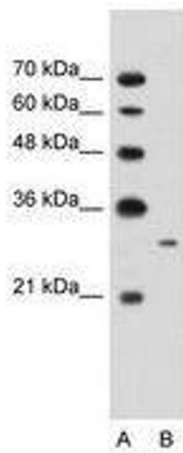


Image 2.