

Datasheet for ABIN203433
anti-SLC22A7 antibody (AA 51-100)

2 Images

[Go to Product page](#)

Overview

Quantity:	100 µL
Target:	SLC22A7
Binding Specificity:	AA 51-100
Reactivity:	Human, Horse
Host:	Rabbit
Clonality:	Polyclonal
Conjugate:	This SLC22A7 antibody is un-conjugated
Application:	Western Blotting (WB), Immunohistochemistry (IHC), Immunohistochemistry (Paraffin-embedded Sections) (IHC (p))

Product Details

Immunogen:	Synthetic peptide located between aa51-100 of human SLC22A7 (Q5T048, NP_006663). Percent identity by BLAST analysis: Human, Chimpanzee, Gorilla, Orangutan, Galago, Panda, Horse (100%), Gibbon, Marmoset, Bovine, Bat, Guinea pig (92%), Pig (85%), Rat (78%). Type of Immunogen: Synthetic peptide
Isotype:	IgG
Specificity:	Human SLC22A7
Predicted Reactivity:	Percent identity by BLAST analysis: Human, Horse (100%) Guinea pig (92%).
Purification:	Protein A purified

Target Details

Target:	SLC22A7
Alternative Name:	SLC22A7 / OAT2 (SLC22A7 Products)
Background:	Name/Gene ID: SLC22A7 Subfamily: Organic anion transporter Family: Transporter Synonyms: SLC22A7, HOAT2, Liver-specific transporter, OAT2, Organic anion transporter 2, NLT, Novel liver transporter
Gene ID:	10864
NCBI Accession:	NP_006663
UniProt:	Q9Y694

Application Details

Application Notes:	Approved: IHC, IHC-P, WB (5 µg/mL)
Comment:	Target Species of Antibody: Human
Restrictions:	For Research Use only

Handling

Format:	Lyophilized
Reconstitution:	After adding water, will consist of PBS buffer with 2 % sucrose
Concentration:	Lot specific
Buffer:	Lyophilized from PBS with 2 % sucrose
Handling Advice:	Avoid repeat freeze-thaw cycles.
Storage:	4 °C, -20 °C
Storage Comment:	Long term: -20°C, the use of 50% glycerol is recommended if storing aliquots in -20°C for long term use (up to 1 year) Short term (less than 1 week): 4°C. Avoid freeze-thaw cycles.

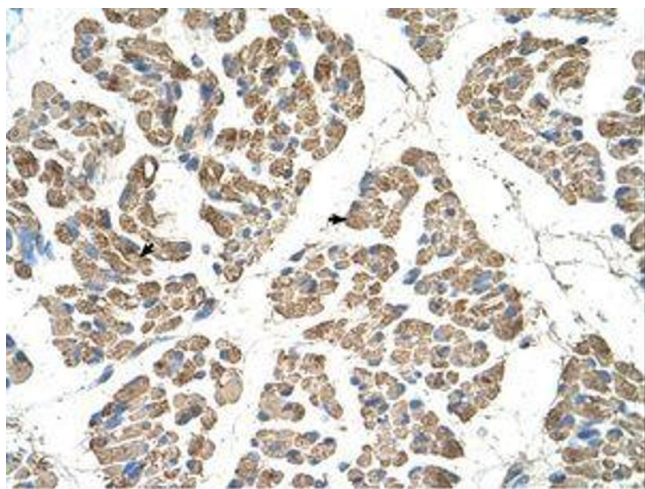


Image 1.

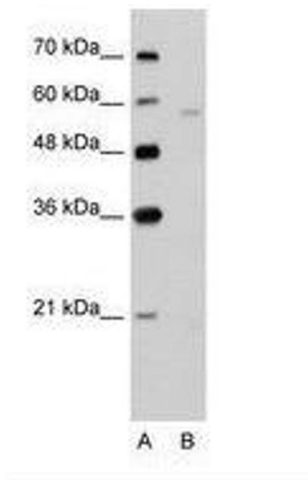


Image 2.