



[Go to Product page](#)

Datasheet for ABIN203442
anti-EGFL8 antibody (C-Term)

2 Images

Overview

Quantity:	100 µL
Target:	EGFL8
Binding Specificity:	C-Term
Reactivity:	Human, Mouse, Rat, Dog, Horse, Pig, Rabbit, Monkey
Host:	Rabbit
Clonality:	Polyclonal
Conjugate:	This EGFL8 antibody is un-conjugated
Application:	Immunohistochemistry (IHC), Western Blotting (WB), Immunohistochemistry (Paraffin-embedded Sections) (IHC (p))

Product Details

Immunogen:	Synthetic peptide from C-Terminus of human EGFL8 (Q99944, NP_085155). Percent identity by BLAST analysis: Human, Chimpanzee, Gorilla, Gibbon, Monkey, Galago, Marmoset, Mouse, Rat, Rabbit, Horse, Pig (100%), Elephant, Bovine, Opossum (92%), Dog (85%). Type of Immunogen: Synthetic peptide
Isotype:	IgG
Specificity:	Human EGFL8
Predicted Reactivity:	Percent identity by BLAST analysis: Human, Mouse, Rat, Pig (100%) Bovine (92%) Dog (85%).
Purification:	Protein A purified

Target Details

Target:	EGFL8
Alternative Name:	EGFL8 / NG3 (EGFL8 Products)
Background:	Name/Gene ID: EGFL8 Synonyms: EGFL8, EGF-like-domain, multiple 8, EGF-like protein 8, NG3, VE-statin-2, Vascular endothelial statin-2, C6orf8
Gene ID:	80864
NCBI Accession:	NP_085155
UniProt:	Q99944

Application Details

Application Notes:	Approved: IHC, IHC-P, WB (1.25 µg/mL)
Comment:	Target Species of Antibody: Human
Restrictions:	For Research Use only

Handling

Format:	Lyophilized
Reconstitution:	After adding water, will consist of PBS buffer with 2 % sucrose
Concentration:	Lot specific
Buffer:	Lyophilized from PBS with 2 % sucrose
Handling Advice:	Avoid repeat freeze-thaw cycles.
Storage:	4 °C, -20 °C
Storage Comment:	Long term: -20°C, the use of 50% glycerol is recommended if storing aliquots in -20°C for long term use (up to 1 year) Short term (less than 1 week): 4°C. Avoid freeze-thaw cycles.

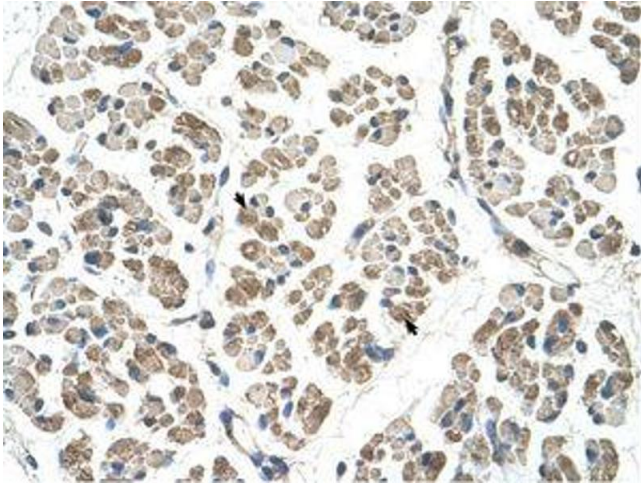


Image 1.

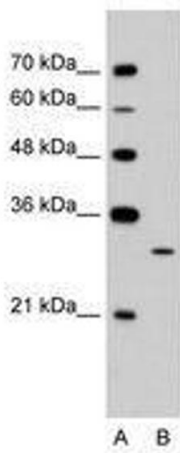


Image 2.