



Datasheet for ABIN203454

anti-THO Complex 4 antibody (AA 58-107)



[Go to Product page](#)

2 Images

Overview

Quantity:	100 µL
Target:	THO Complex 4 (THOC4)
Binding Specificity:	AA 58-107
Reactivity:	Human, Mouse, Rat, Xenopus laevis, Cow, Zebrafish (Danio rerio), Monkey
Host:	Rabbit
Clonality:	Polyclonal
Conjugate:	This THO Complex 4 antibody is un-conjugated
Application:	Western Blotting (WB), Immunohistochemistry (IHC), Immunohistochemistry (Paraffin-embedded Sections) (IHC (p))

Product Details

Immunogen:	Synthetic peptide located between aa58-107 of human ALYREF (Q86V81, NP_005773). Percent identity by BLAST analysis: Human, Chimpanzee, Gorilla, Gibbon, Monkey, Mouse, Rat, Elephant, Bovine, Opossum, Xenopus, Zebrafish (100%), Zebra finch, Chicken, Lizard, Salmon (92%), Stickleback (85%). Type of Immunogen: Synthetic peptide
Isotype:	IgG
Specificity:	Human THOC4
Predicted Reactivity:	Percent identity by BLAST analysis: Human, Mouse, Rat, Bovine (100%).
Purification:	Protein A purified

Target Details

Target:	THO Complex 4 (THOC4)
Alternative Name:	ALY / THOC4 (THOC4 Products)
Background:	Name/Gene ID: ALYREF Synonyms: ALYREF, ALY, BEF, BZIP enhancing factor, BZIP-enhancing factor BEF, Ally of AML-1 and LEF-1, Aly/REF export factor, THO complex 4, THO complex subunit 4, REF, THOC4, Tho4
Gene ID:	10189
NCBI Accession:	NP_005773
UniProt:	Q86V81

Application Details

Application Notes:	Approved: IHC, IHC-P, WB (2.5 µg/mL)
Comment:	Target Species of Antibody: Human
Restrictions:	For Research Use only

Handling

Format:	Lyophilized
Reconstitution:	After adding water, will consist of PBS buffer with 2 % sucrose
Concentration:	Lot specific
Buffer:	Lyophilized from PBS with 2 % sucrose
Handling Advice:	Avoid repeat freeze-thaw cycles.
Storage:	4 °C, -20 °C
Storage Comment:	Long term: -20°C, the use of 50% glycerol is recommended if storing aliquots in -20°C for long term use (up to 1 year) Short term (less than 1 week): 4°C. Avoid freeze-thaw cycles.

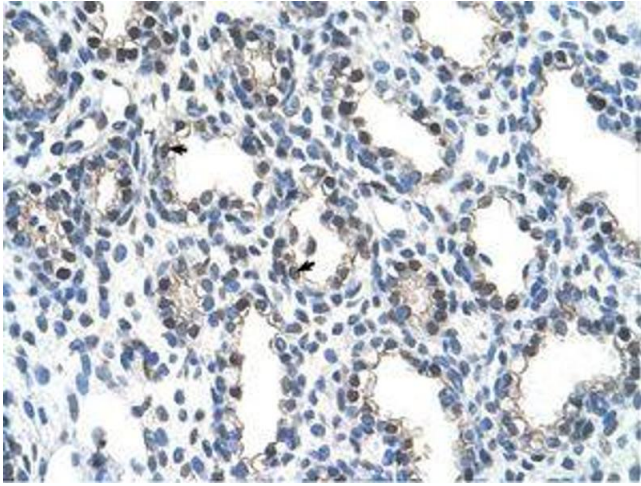


Image 1.



Image 2.