

Datasheet for ABIN203462
anti-Asporin antibody (AA 250-299)

2 Images

[Go to Product page](#)

Overview

Quantity:	100 µL
Target:	Asporin (ASPN)
Binding Specificity:	AA 250-299
Reactivity:	Human, Rat, Dog, Rabbit, Monkey
Host:	Rabbit
Clonality:	Polyclonal
Conjugate:	This Asporin antibody is un-conjugated
Application:	Western Blotting (WB), Immunohistochemistry (IHC), Immunohistochemistry (Paraffin-embedded Sections) (IHC (p))

Product Details

Immunogen:	Synthetic peptide located between aa250-299 of human ASPN (Q5TBF3, NP_060150). Percent identity by BLAST analysis: Human, Chimpanzee, Gorilla, Gibbon, Marmoset, Rat (100%), Galago, Mouse, Elephant, Panda, Bovine, Bat, Horse, Pig (92%), Dog, Rabbit, Guinea pig, Turkey, Chicken, Platypus, Lizard (85%). Type of Immunogen: Synthetic peptide
Isotype:	IgG
Specificity:	Human ASPN / Asporin
Predicted Reactivity:	Percent identity by BLAST analysis: Human, Rat (100%) Mouse, Bovine, Horse, Pig (92%) Dog, Rabbit, Chicken (85%).

Product Details

Purification: Protein A purified

Target Details

Target: Asporin (ASPN)

Alternative Name: ASPN / Asporin ([ASPN Products](#))

Background: Name/Gene ID: ASPN

Synonyms: ASPN, Asporin (LRR class 1), PLAP-1, SLRR1C, OS3, PLAP1, Asporin, Asporin proteoglycan, Small leucine-rich protein 1C

Gene ID: 54829

NCBI Accession: [NP_060150](#)

UniProt: [Q9BXN1](#)

Application Details

Application Notes: Approved: IHC, IHC-P (2 µg/mL), WB (4 - 8 µg/mL)

Comment: Target Species of Antibody: Human

Restrictions: For Research Use only

Handling

Format: Lyophilized

Reconstitution: After adding water, will consist of PBS buffer with 2 % sucrose

Concentration: Lot specific

Buffer: Lyophilized from PBS with 2 % sucrose

Handling Advice: Avoid repeat freeze-thaw cycles.

Storage: 4 °C, -20 °C

Storage Comment: Long term: -20°C, the use of 50% glycerol is recommended if storing aliquots in -20°C for long term use (up to 1 year)

Short term (less than 1 week): 4°C. Avoid freeze-thaw cycles.

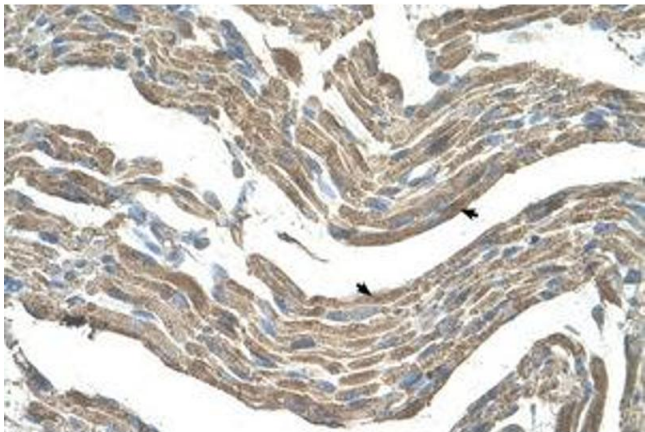


Image 1.

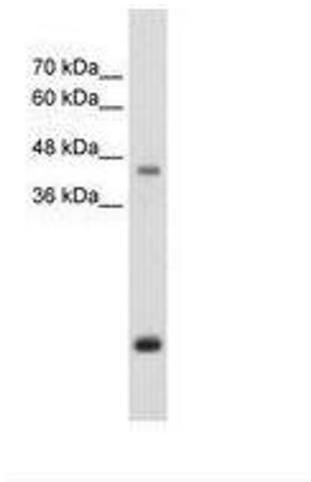


Image 2.