

Datasheet for ABIN203463

**anti-EPS8-Like 1 antibody (AA 51-100)****2** Images[Go to Product page](#)

## Overview

Quantity:	100 µL
Target:	EPS8-Like 1 (EPS8L1)
Binding Specificity:	AA 51-100
Reactivity:	Human, Mouse, Rat, Dog, Horse, Monkey
Host:	Rabbit
Clonality:	Polyclonal
Conjugate:	This EPS8-Like 1 antibody is un-conjugated
Application:	Western Blotting (WB), Immunohistochemistry (IHC), Immunohistochemistry (Paraffin-embedded Sections) (IHC (p))

## Product Details

Immunogen:	Synthetic peptide located between aa51-100 of human EPS8L1 (Q8TE68-2, NP_060199). Percent identity by BLAST analysis: Human, Chimpanzee, Gorilla, Gibbon, Monkey, Mouse, Rat, Horse (100%), Dog (85%).  Type of Immunogen: Synthetic peptide
Isotype:	IgG
Specificity:	Human EPS8L1
Predicted Reactivity:	Percent identity by BLAST analysis: Human, Mouse, Rat, Horse (100%) Dog (85%).
Purification:	Protein A purified

## Target Details

Target:	EPS8-Like 1 (EPS8L1)
Alternative Name:	EPS8L1 ( <a href="#">EPS8L1 Products</a> )
Background:	Name/Gene ID: EPS8L1  Synonyms: EPS8L1, EPS8-like 1, EPS8-related protein 1, EPS8R1, EPS8-like protein 1, DRC3, PP10566
Gene ID:	54869
NCBI Accession:	<a href="#">NP_060199</a>
UniProt:	<a href="#">Q8TE68</a>

## Application Details

Application Notes:	Approved: IHC, IHC-P, WB (1.25 µg/mL)
Comment:	Target Species of Antibody: Human
Restrictions:	For Research Use only

## Handling

Format:	Lyophilized
Reconstitution:	After adding water, will consist of PBS buffer with 2 % sucrose
Concentration:	Lot specific
Buffer:	Lyophilized from PBS with 2 % sucrose
Handling Advice:	Avoid repeat freeze-thaw cycles.
Storage:	4 °C, -20 °C
Storage Comment:	Long term: -20°C, the use of 50% glycerol is recommended if storing aliquots in -20°C for long term use (up to 1 year)  Short term (less than 1 week): 4°C. Avoid freeze-thaw cycles.

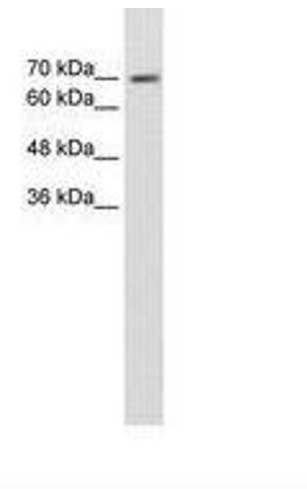


Image 1.

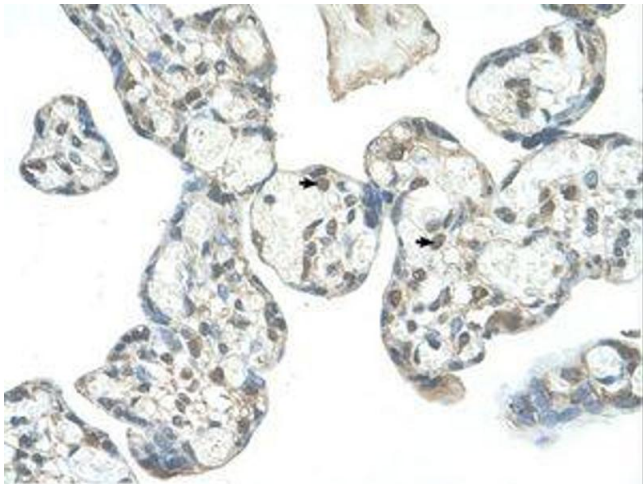


Image 2.