



Datasheet for ABIN203467
anti-S1PR5 antibody (N-Term)



[Go to Product page](#)

2 Images

Overview

Quantity:	100 µL
Target:	S1PR5
Binding Specificity:	N-Term
Reactivity:	Human, Mouse, Rat, Dog, Pig, Monkey, Bat
Host:	Rabbit
Clonality:	Polyclonal
Conjugate:	This S1PR5 antibody is un-conjugated
Application:	Western Blotting (WB), Immunohistochemistry (IHC), Immunohistochemistry (Paraffin-embedded Sections) (IHC (p))

Product Details

Immunogen:	Synthetic peptide from N-Terminus of human S1PR5 (Q9H228). Percent identity by BLAST analysis: Human, Chimpanzee, Gorilla, Monkey, Marmoset, Mouse, Rat, Elephant, Dog, Bat, Pig, Opossum (100%), Hamster (92%), Bovine (80%). Type of Immunogen: Synthetic peptide
Isotype:	IgG
Specificity:	Human S1PR5 / EDG8
Predicted Reactivity:	Percent identity by BLAST analysis: Human, Mouse, Rat, Dog, Pig (100%).
Purification:	Protein A purified

Target Details

Target:	S1PR5
Alternative Name:	S1PR5 / EDG8 / S1P5 (S1PR5 Products)
Background:	Name/Gene ID: S1PR5 Subfamily: Lysophospholipid/Lysosphingolipid Family: GPCR Synonyms: S1PR5, EDG8, Edg-8, S1P receptor Edg-8, S1P receptor 5, S1P(5) receptor, S1P5, SPPR-1, SPPR-2
Gene ID:	53637
UniProt:	Q9H228

Application Details

Application Notes:	Approved: IHC, IHC-P, WB (2.5 µg/mL)
Comment:	Target Species of Antibody: Human
Restrictions:	For Research Use only

Handling

Format:	Lyophilized
Reconstitution:	After adding water, will consist of PBS buffer with 2 % sucrose
Concentration:	Lot specific
Buffer:	Lyophilized from PBS with 2 % sucrose
Handling Advice:	Avoid repeat freeze-thaw cycles.
Storage:	4 °C,-20 °C
Storage Comment:	Long term: -20°C, the use of 50% glycerol is recommended if storing aliquots in -20°C for long term use (up to 1 year) Short term (less than 1 week): 4°C. Avoid freeze-thaw cycles.

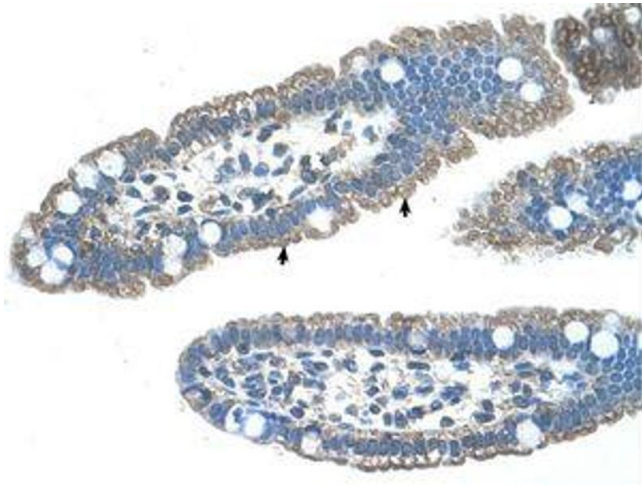


Image 1.



Image 2.