

Datasheet for ABIN203468
anti-SLC38A4 antibody (AA 381-430)



[Go to Product page](#)

2 Images

Overview

Quantity:	100 µL
Target:	SLC38A4
Binding Specificity:	AA 381-430
Reactivity:	Human, Mouse, Rat, Dog, Cow, Monkey
Host:	Rabbit
Clonality:	Polyclonal
Conjugate:	This SLC38A4 antibody is un-conjugated
Application:	Western Blotting (WB), Immunohistochemistry (IHC), Immunohistochemistry (Paraffin-embedded Sections) (IHC (p))

Product Details

Immunogen:	Synthetic peptide located between aa381-430 of human SLC38A4 (Q969I6, NP_060488). Percent identity by BLAST analysis: Human, Gorilla, Orangutan, Gibbon, Monkey, Galago, Marmoset, Mouse, Rat, Panda, Dog, Bovine (100%), Elephant, Bat, Rabbit, Horse, Opossum, Guinea pig (92%), Stickleback, Zebrafish (90%), Zebra finch (84%), Salmon (83%). Type of Immunogen: Synthetic peptide
Isotype:	IgG
Specificity:	Human SLC38A4
Predicted Reactivity:	Percent identity by BLAST analysis: Dog, Bovine (100%) Rabbit, Horse (92%).
Purification:	Protein A purified

Target Details

Target:	SLC38A4
Alternative Name:	SLC38A4 / SNAT4 (SLC38A4 Products)
Background:	Name/Gene ID: SLC38A4 Subfamily: Amino acid transporter Family: Transporter Synonyms: SLC38A4, Amino acid transporter A3, ATA3, MNAT3, PAAT, SNAT4, NAT3, MATA3, N amino acid transporter 3
Gene ID:	55089
NCBI Accession:	NP_060488
UniProt:	Q96916

Application Details

Application Notes:	Approved: IHC, IHC-P, WB (2.5 µg/mL)
Comment:	Target Species of Antibody: Human
Restrictions:	For Research Use only

Handling

Format:	Lyophilized
Reconstitution:	After adding water, will consist of PBS buffer with 2 % sucrose
Concentration:	Lot specific
Buffer:	Lyophilized from PBS with 2 % sucrose
Handling Advice:	Avoid repeat freeze-thaw cycles.
Storage:	4 °C, -20 °C
Storage Comment:	Long term: -20°C, the use of 50% glycerol is recommended if storing aliquots in -20°C for long term use (up to 1 year) Short term (less than 1 week): 4°C. Avoid freeze-thaw cycles.

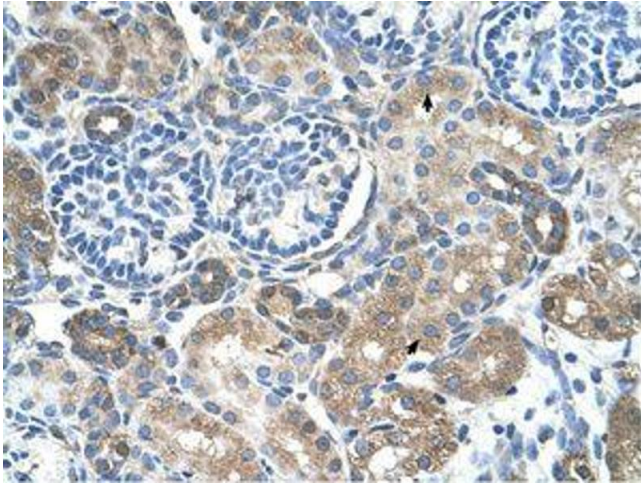


Image 1.

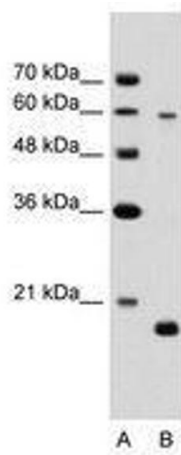


Image 2.