



Datasheet for ABIN203469
anti-BSDC1 antibody (AA 84-133)



[Go to Product page](#)

2 Images

Overview

Quantity:	100 µL
Target:	BSDC1
Binding Specificity:	AA 84-133
Reactivity:	Human, Mouse, Cow, Guinea Pig, Horse, Rabbit, Hamster, Monkey, Pig
Host:	Rabbit
Clonality:	Polyclonal
Conjugate:	This BSDC1 antibody is un-conjugated
Application:	Western Blotting (WB), Immunohistochemistry (IHC), Immunohistochemistry (Paraffin-embedded Sections) (IHC (p))

Product Details

Immunogen:	Synthetic peptide located between aa84-133 of human BSDC1 (Q9NW68-3, NP_060515). Percent identity by BLAST analysis: Human, Chimpanzee, Gorilla, Gibbon, Monkey, Galago, Marmoset, Mouse, Hamster, Elephant, Panda, Bovine, Rabbit, Horse, Pig, Guinea pig (100%), Dog, Bat, Platypus (92%), Xenopus (85%). Type of Immunogen: Synthetic peptide
Isotype:	IgG
Specificity:	Human BSDC1
Predicted Reactivity:	Percent identity by BLAST analysis: Human, Mouse, Bovine, Rabbit, Horse, Guinea pig (100%) Dog (92%).

Product Details

Purification: Protein A purified

Target Details

Target: BSDC1

Alternative Name: BSDC1 ([BSDC1 Products](#))

Background: Name/Gene ID: BSDC1

Synonyms: BSDC1, RP4-811H24.7, BSD domain containing 1

Gene ID: 55108

NCBI Accession: [NP_060515](#)

UniProt: [Q9NW68](#)

Application Details

Application Notes: Approved: IHC, IHC-P, WB (2.5 µg/mL)

Comment: Target Species of Antibody: Human

Restrictions: For Research Use only

Handling

Format: Lyophilized

Reconstitution: After adding water, will consist of PBS buffer with 2 % sucrose

Concentration: Lot specific

Buffer: Lyophilized from PBS with 2 % sucrose

Handling Advice: Avoid repeat freeze-thaw cycles.

Storage: 4 °C,-20 °C

Storage Comment: Long term: -20°C, the use of 50% glycerol is recommended if storing aliquots in -20°C for long term use (up to 1 year)

Short term (less than 1 week): 4°C. Avoid freeze-thaw cycles.

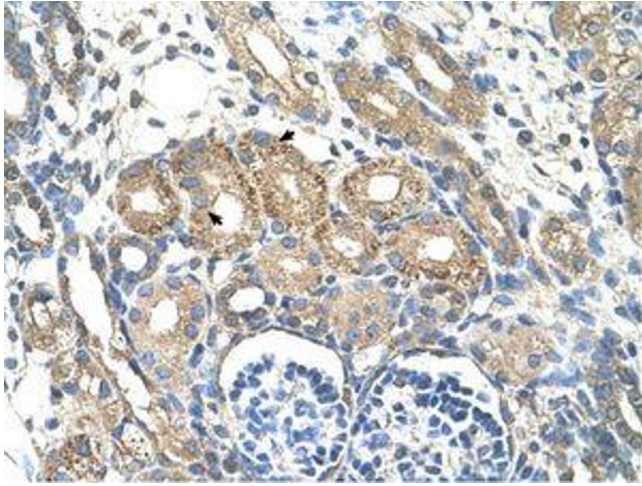


Image 1.

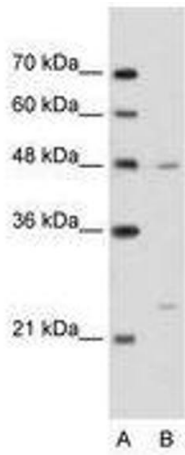


Image 2.