



Datasheet for ABIN203472
anti-AMFR antibody (AA 110-159)



[Go to Product page](#)

1 Image

Overview

Quantity:	100 µL
Target:	AMFR
Binding Specificity:	AA 110-159
Reactivity:	Human, Mouse, Rat, Dog, Cow, Guinea Pig, Horse, Rabbit, Bat, Chicken, Monkey, Pig
Host:	Rabbit
Clonality:	Polyclonal
Conjugate:	This AMFR antibody is un-conjugated
Application:	Western Blotting (WB)

Product Details

Immunogen:	Synthetic peptide located between aa110-159 of human AMFR (Q6PGR1). Percent identity by BLAST analysis: Human, Chimpanzee, Gibbon, Galago, Marmoset, Mouse, Rat, Elephant, Dog, Bovine, Bat, Rabbit, Horse, Pig, Opossum, Guinea pig, Turkey, Zebra finch, Chicken (100%), Xenopus, Zebrafish (92%), Salmon (84%). Type of Immunogen: Synthetic peptide
Isotype:	IgG
Specificity:	Human AMFR
Predicted Reactivity:	Percent identity by BLAST analysis: Human, Mouse, Rat, Dog, Bovine, Rabbit, Horse, Pig, Chicken (100%) Xenopus, Zebrafish (92%).
Purification:	Protein A purified

Target Details

Target:	AMFR
Alternative Name:	GP78 / AMFR (AMFR Products)
Background:	Name/Gene ID: AMFR Synonyms: AMFR, AMF receptor, isoform 1, AMF receptor, isoform 2, gp78, RNF45, RING finger protein 45
Gene ID:	267
UniProt:	Q9UKV5
Pathways:	ER-Nucleus Signaling

Application Details

Application Notes:	Approved: WB (2.5 µg/mL)
Comment:	Target Species of Antibody: Human
Restrictions:	For Research Use only

Handling

Format:	Lyophilized
Reconstitution:	After adding water, will consist of PBS buffer with 2 % sucrose
Concentration:	Lot specific
Buffer:	Lyophilized from PBS with 2 % sucrose
Handling Advice:	Avoid repeat freeze-thaw cycles.
Storage:	4 °C, -20 °C
Storage Comment:	Long term: -20°C, the use of 50% glycerol is recommended if storing aliquots in -20°C for long term use (up to 1 year) Short term (less than 1 week): 4°C. Avoid freeze-thaw cycles.

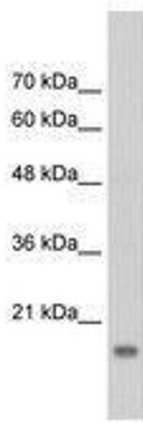


Image 1.