



[Go to Product page](#)

Datasheet for ABIN203473

anti-UBE2D1 antibody (AA 91-140)

1 Image

Overview

Quantity:	100 µL
Target:	UBE2D1
Binding Specificity:	AA 91-140
Reactivity:	Human, Mouse, Rat, Dog, Cow, Goat, Horse, Pig, Bat, Chicken, Monkey
Host:	Rabbit
Clonality:	Polyclonal
Conjugate:	This UBE2D1 antibody is un-conjugated
Application:	Western Blotting (WB)

Product Details

Immunogen:	Synthetic peptide located between aa91-140 of human UBE2D1 (P51668, NP_003329). Percent identity by BLAST analysis: Human, Chimpanzee, Gibbon, Monkey, Galago, Marmoset, Mouse, Rat, Goat, Elephant, Panda, Dog, Bovine, Bat, Horse, Pig, Opossum, Turkey, Zebra finch, Chicken, Platypus (100%), Rabbit, Xenopus, Zebrafish (92%). Type of Immunogen: Synthetic peptide
Isotype:	IgG
Specificity:	Human UBE2D1
Predicted Reactivity:	Percent identity by BLAST analysis: Mouse, Dog, Goat, Pig, Chicken (100%) Xenopus, Zebrafish (92%).
Purification:	Protein A purified

Target Details

Target:	UBE2D1
Alternative Name:	UBE2D1 / UBCH5 (UBE2D1 Products)
Background:	Name/Gene ID: UBE2D1 Synonyms: UBE2D1, SFT, Ubiquitin-protein ligase D1, UBC4/5 homolog, UBCH5, UBCH5A, UBC4/5, UBC5A, Ubiquitin carrier protein D1, E2(17)KB1, Stimulator of Fe transport
Gene ID:	7321
NCBI Accession:	NP_003329
UniProt:	P51668
Pathways:	Activation of Innate immune Response , Toll-Like Receptors Cascades

Application Details

Application Notes:	Approved: WB (1.25 µg/mL)
Comment:	Target Species of Antibody: Human
Restrictions:	For Research Use only

Handling

Format:	Lyophilized
Reconstitution:	After adding water, will consist of PBS buffer with 2 % sucrose
Concentration:	Lot specific
Buffer:	Lyophilized from PBS with 2 % sucrose
Handling Advice:	Avoid repeat freeze-thaw cycles.
Storage:	4 °C,-20 °C
Storage Comment:	Long term: -20°C, the use of 50% glycerol is recommended if storing aliquots in -20°C for long term use (up to 1 year) Short term (less than 1 week): 4°C. Avoid freeze-thaw cycles.

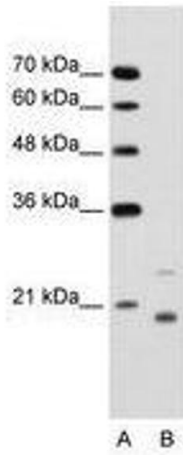


Image 1.